

Aussie Pumps

Reliable Products ... Reliable People

Aussie Pumps

5 YEAR
pump end
warranty

AUSSIE QUIK PRIME DIESEL DRIVE FIRE FIGHTING PUMPS

The **Aussie Fire Chief**, **Fire Captain** and **"Mr T"** super high pressure twin impeller fire pumps are available with diesel drive making them safer to use for fire duties as diesel is less flammable than petrol.

These pumps were designed with extraordinary performance, quality components and for ease of service. The **Aussie Fire Chief** is the choice of farmers and professional fire fighting authorities around the world.

Aussie Fire Chief (QP205SE)

Designed to out-perform and out-feature all other portable fire fighting pumps, the **Aussie Fire Chief** offers users significant quality features.

These include a huge 7½" diameter, one piece impeller that weighs up to 2½ times more than impellers in other brands. The big belly body provides large water passages allowing more water to

get through the pump and significantly aiding performance.

The pump will produce flows of up to 400 litres per minute and heads as high as 60 metres. It is available with **Yanmar**, **Kubota** or **Hatz** diesel engines and conforms with tough international environmental emission standards. The Fire Chief comes with anti vibration mounts and gal steel roll frames as standard equipment.

Aussie Fire Captain Plus (QP205SL & QP305SL)

A big single impeller Aussie Fire Chief pump but with either a **Yanmar**, **Hatz** or **Kubota** diesel engine ranging from 6HP through to 10HP. Electric start option available on all models.

Standard equipment includes full heavy duty gal roll frame with pump performance figures of up to 420 litres per minute flow, 65 metres head.

3" version (QP305SL) also available with flows to 520 litres & heads to 60 metres.



"Mr T" twin impeller

YANMAR

Aussie "Mr T" Twin Impeller Fire Pump (QPT-205SLT)

The Aussie "Mr T" is the final extension of development of the Aussie Fire Chief. It is a heavy duty twin impeller pump but with a difference!

The huge, closed vane dual impellers create a combination of high pressure and high flow that is unmatched, max head is 90 metres, max flow is 450 litres per minute.

The Aussie "Mr T" twin impeller range is available with **Yanmar** or **Kubota** diesel powered engines with electric start.



QP205SE/L48

Aussie Mine Boss Fire Pumps

Yanmar diesel powered Fire Chief or Mr T with additional features for added safety

- 38mm super robust gal frame
- Balanced lifting bar
- Emergency stop
- Lockable battery isolation
- Gel battery
- Integrated fire extinguisher
- Hi vis tape



Due to our program of continuous product development the manufacturer reserves the right to alter specifications without notice.

Aussie Pumps

Reliable Products ... Reliable People



AUSSIE QUIK PRIME DIESEL DRIVE FIRE FIGHTING PUMPS

Features

- Five year warranty
- Lightweight portable
- Fast self priming from 7.6 metres
- Replaceable flanged suction port cover and discharge elbow
- Available with Yanmar, Kubota or Hatz diesel engine (two year manufacturers warranty)
- Full frame with anti vibration mounts
- Single piece, heavy duty closed impeller
- Replaceable three way outlet (optional 2" or 3" outlet to maximise performance)
- Replaceable big 2 inch inlet
- Big belly body
- Three way outlet has top quality caps with metal chains
- Big drain port
- Big integrated priming port
- Optional Viton seal and o-ring kit

Benefits

- » Great quality ... use with confidence
- » Weighs from only 58kgs
- » Ready to pump in minimum amount of time
- » Easily replaced if thread damaged, easy to service check valve without dismantling pump
- » Established service networks throughout the world, proven economy & longevity.
- » Protects pump, facilitates transport on site
- » Pumps more water at high pressure, saves fuel
- » Enables choice of plumbing sizes from 1" to 1 ½ "
- » Lets more water into the pump, easy access to check valve
- » Larger water passages mean more water efficiency, lower fuel costs
- » Top quality, ensures outlet cap security
- » Fast, easy pump draining
- » Facilitates fast self priming
- » Enables pump to be used in some herbicide or insecticide spraying applications



Fire Captain Plus with Hatz 1B30E



Applications:

- Fire fighting, mop up & general fire protection
- High pressure water transfer
- Spray irrigation
- Diesel fuel transfer with Viton seals fitted
- High pressure spraying
- Sheep jetting
- Boom spraying
- Stock crate wash down
- Machinery wash down

Other configurations:

- Honda petrol drive
- Hydraulic drive

Specifications

Model	Yanmar Diesel		Kubota Diesel		Hatz Diesel		Max Head (m)	Max Flow (lpm)	Suction port	Discharge port	Self primes to (m)
	Model	HP	Model	HP	Model	HP					
Fire Chief (QP205SE)	L48 (E)	4.8	OC60E	6	1B20	4.2	60	400	2"	2 x 1", 1 x 1½"	7.6
Fire Captain Plus (QP205SL)	L70 (E)	7	OC95E	9.5	1B30E	6.4	60	500	2"	2 x 1", 1 x 1½"	7.6
Mr T Twin impeller (QPT-205SLT)	L100E	10	OC95E	9.5	-	-	90	450	2"	2 x 1", 1 x 1½"	7.6
QP305SL	L70 (E)	7	OC95E	9.5	1B30E	9	60	500	3"	3"	7.6
3" Mr T Twin QPT305SLT	L100E	10	-	-	-	-	90	450	3"	3"	7.6

E in the engine model denotes electric start, (E) denotes electric or recoil start options

NOTE: Aussie stock codes for QP pumps are determined by using the pump & engine model, for example QP205SL/OC95E is the 9.5HP Kubota, electric start version of the QP205SL

Due to our program of continuous product development the manufacturer reserves the right to alter specifications without notice.



Aussie Pumps

Reliable Products ... Reliable People

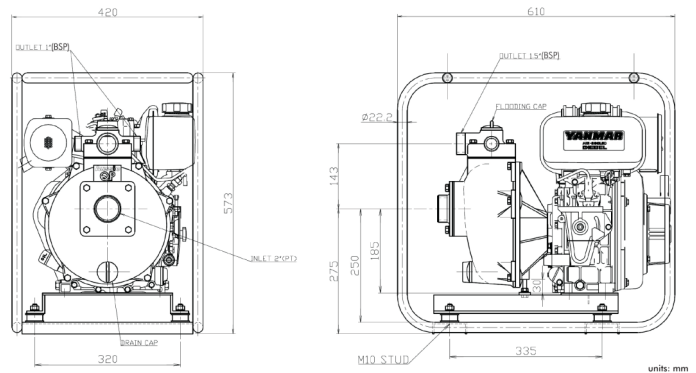
Aussie Pumps
5 YEAR
pump end
warranty

AUSSIE QUIK PRIME DIESEL DRIVE FIRE FIGHTING PUMPS

Construction:

Front case	Marine grade aluminium
Volute	Marine grade aluminium
Back plate	Marine grade aluminium
Mechanical seal	Carbon/ceramic
Outlet	Marine grade aluminium
Casing bolts	Zinc plated steel
Check valve	Nitrile rubber
Priming & drain plugs	Polycarbonate
Casing, priming & drain plug o-rings	Nitrile rubber
Finish	Brushed aluminium
Impeller	Marine grade aluminium, closed type

Dimensions:

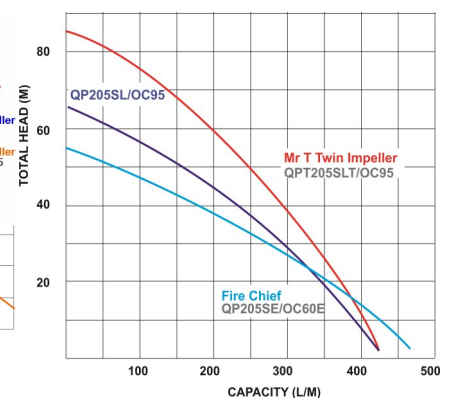
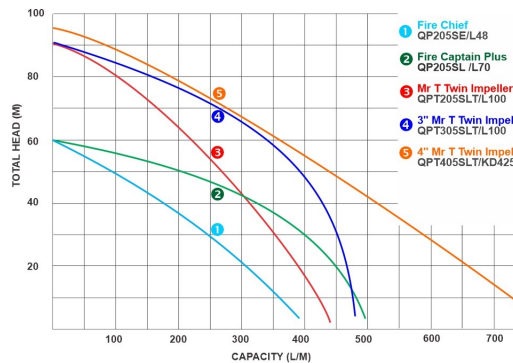


Model	Engine	Width (mm)	Height (mm)	Length (mm)	Weight (kg)
Fire Chief QP205SE	L48	420	573	610	45
(electric start version)	L48E	542	573	610	50
Fire Captain Plus QP205SL Aussie QP305	L70	560	680	760	70
Fire Captain Plus QP205SL Mr T Twin Impeller QP205SLT QP305SL, QPT305SLT	L100E	560	680	760	100

Performance Curves:

Golden Rule

Operate pump at the best efficiency point
... 85% of max pump head



Kubota Mr T ... QPT205SLT/OC95



Hatz Fire Chief ... QP205SE/1B20

Optional Accessories:

- Heavy duty suction hose
- Fire fighting hose kits including deluxe hose kit with two 20 metre delivery hoses and fire fighting nozzles
- Coupling Kit
- Strainer

Due to our program of continuous product development the manufacturer reserves the right to alter specifications without notice.