

AUSSIE GMP PUMPS BARE SHAFT CORROSION RESISTANT ... 3 YEAR PUMP WARRANTY

Aussie GMP bare shaft corrosion resistant self-priming centrifugal pumps are designed for long coupling to electric motors, petrol or diesel engines, hydraulic or PTO drives.

This extensive range is available in 2", 3" and 4" in a wide range of models providing excellent high pressure and high flow characteristics.

Features

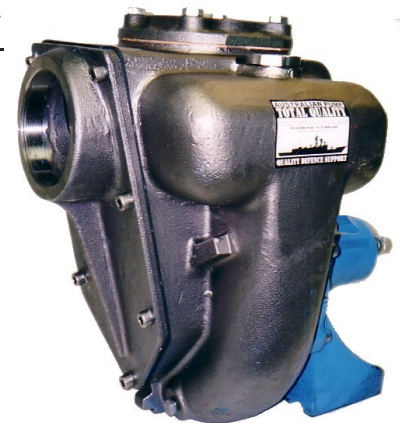
- Self priming vertical lift of 6 metres
- Heavy duty cast construction
- NI AL bronze or cast 316 grade stainless steel
- Replaceable suction port
- Carbon Alumina mechanical seal standard on transfer pumps, silicon carbide seals on semi trash pumps
- All pumps pedestal mounted
- Drive shafts available in high grade steel or stainless steel configurations

The pumps offer flows to 2100 litres per minute and heads 31 metres. Pumps will self-prime from 6 metres and are available in a range of construction materials including Ni Al bronze and cast 316 stainless steel.

Cast iron bare shaft pumps also available, see separate spec sheet.

Benefits

- » Ready to pump in minimum amount of time
- » Longevity and durability
- » Bronze suits marine applications, stainless steel is resistant to abrasion
- » Easy to change if thread damaged, easy access to check valve
- » Flexibility of handled liquids
- » Makes installation simple
- » Applicable to specific models



B3XR-A/SS bare shaft

Applications:

NiAl bronze

- Deck wash down
- Marine air conditioning
- Bilge pump out
- Fire fighting
- Salvage

Cast 316 Stainless steel

- Tailing dam pump out
- Sewage handling
- Aggressive water pumping
- Acid & solvent pumping
- Industrial food waste
- Agricultural chemical transfer

Specifications

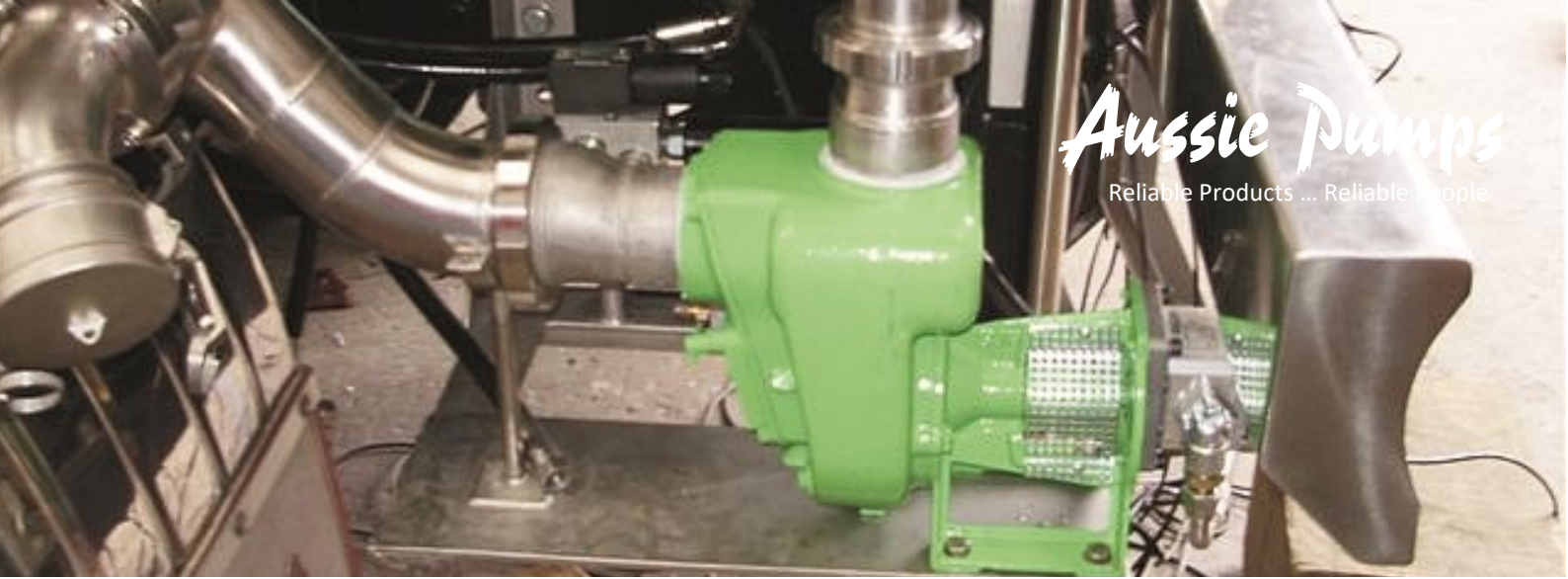
Model	CAT no.	Req'd kW	RPM	Suct/Del	PSI	Total Head (m)	Capacity (l/m)
NIAL bronze - Marine Grade ... stainless steel plugs & fasteners							
B2KQ-A/B W	AS68	1.5	2900	2" x 2"	25	18	400
B3KQ-A/B W	AS69	2.2	2900	3" x 3"	20	14.5	850
B4KQ-A/B W	ASC6	4	2900	4" x 4"	20	14.5	1650
B3XR-A/B W	ASC3	7.5	2900	3" x 3"	43	31	1500
B4XR-A/B W	ASC5/ASDN	15	2900	4" x 4"	43	31	2100
G2TMK-A/B W	ASB9	3	2900	2" x 2"	43	31	400

Stainless Steel—316 Grade for corrosive applications

B2KQ-A/SS W	ASL1	1.5	2900	2" x 2"	28	20	440
B3XR-A/SS W	ASD1	7.5	2900	3" x 3"	43	31	1500
B4XR-A/SS W	ASDS	15	2900	4" x 4"	43	31	2100

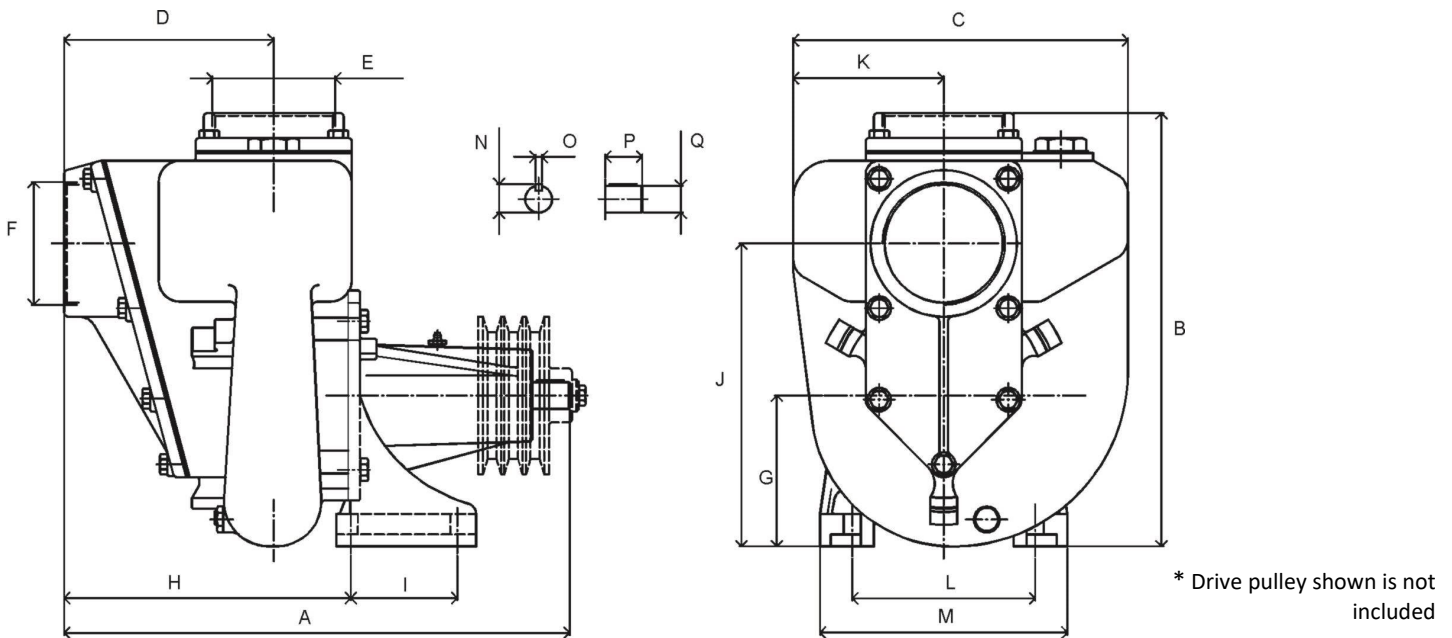
Due to our program of continuous product development the manufacturer reserves the right to alter specifications without notice.





AUSSIE GMP PUMPS
BARE SHAFT CORROSION RESISTANT ... 3 YEAR PUMP WARRANTY

Dimensions:

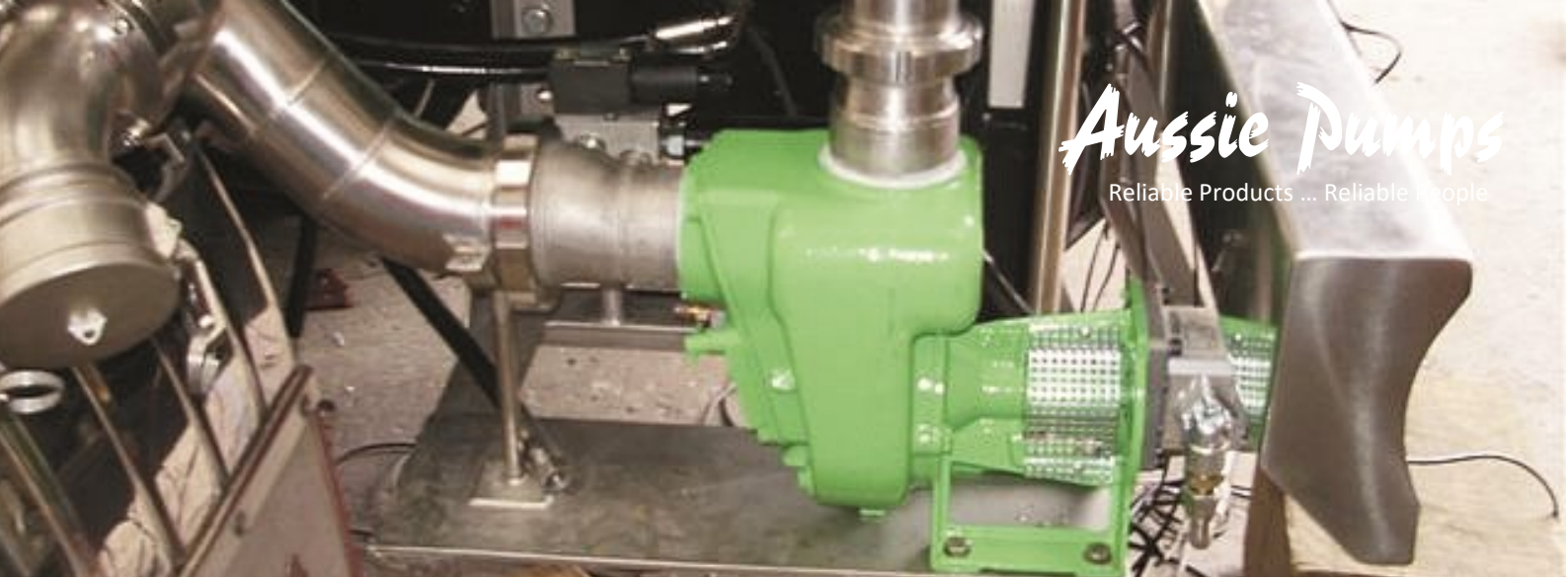


Model	A (mm)	B (mm)	C (mm)	D (mm)	E	F	G (mm)	H (mm)	I (mm)	J (mm)	K (mm)	L (mm)	M (mm)	N (mm)	O (mm)	P (mm)	Q (mm)
B2KQ-A	266	295	184	120	2"	2"	106	180	-	231	87	170	132	17.37	4	36	15.87
B3KQ-A	300	294	185	147	3"	3"	106	215		227	87	170	132	17.37	4	36	15.87
B3XR-A	435	400	280	175	3"	3"	140	232	105	315	136	230	170	26.5	6	34.5	25
B4KQ-A	470	405	315	195	4"	4"	140	265	105	285	140	230	170	26.5	6	34.5	25
B4XR-A	505	450	365	196	4"	4"	154		75		181	230	182	26.5	6	34.5	25
G2TMK-A	370	345	230	122	2"	2"	140	192	75	265	106	182	235	26.5	6	34.5	25

Optional Accessories:

- Heavy duty galvanised steel base
- Medium pressure lay flat delivery hose, working pressure 100 psi
- Carbon ceramic, silicon carbide, tungsten carbide or Viton seals available

Due to our program of continuous product development the manufacturer reserves the right to alter specifications without notice.

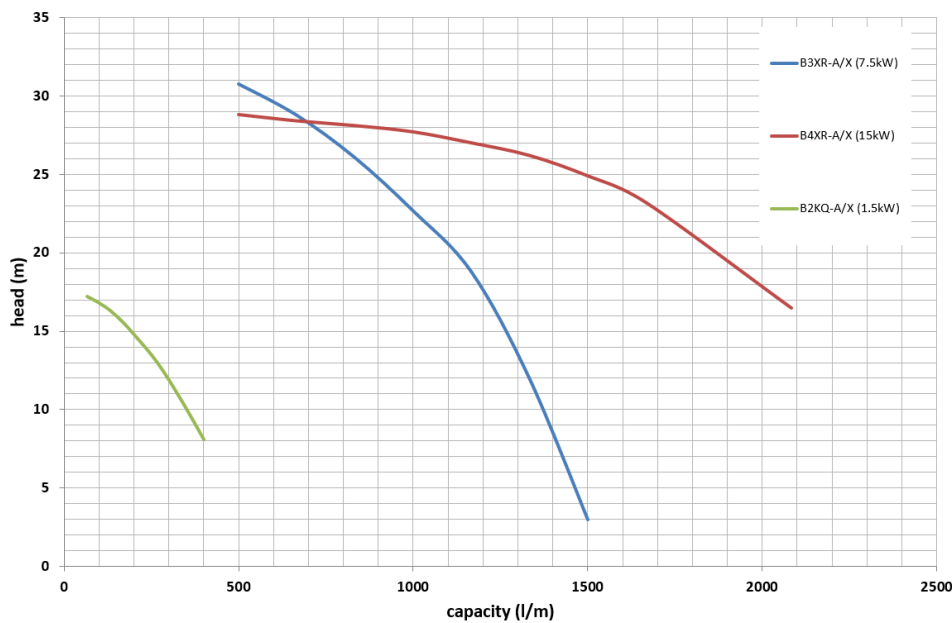
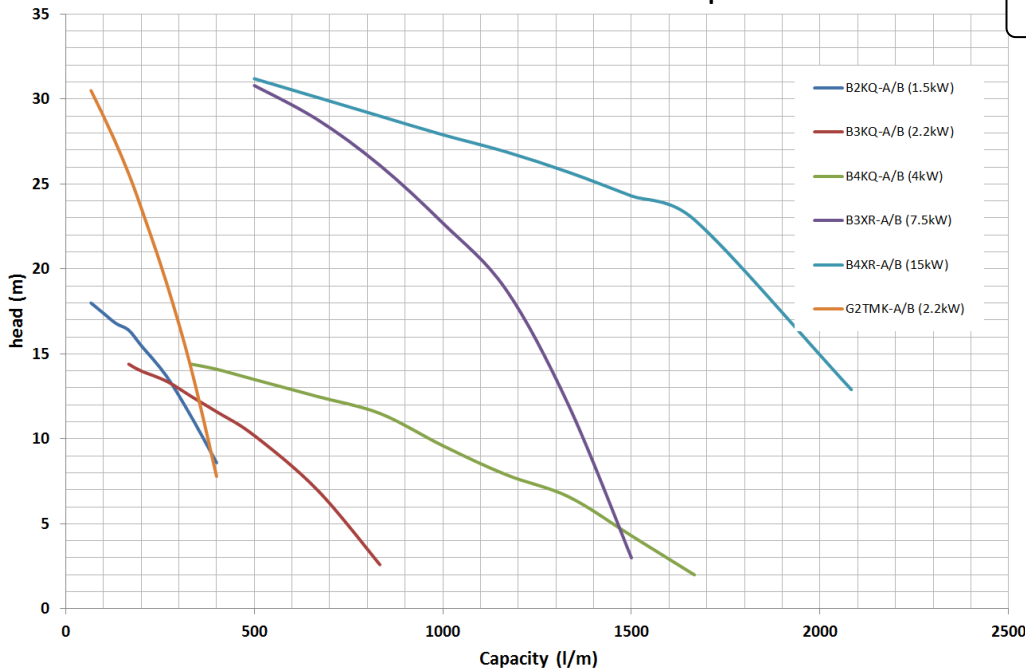


**AUSSIE GMP PUMPS
 BARE SHAFT CORROSION RESISTANT ... 3 YEAR PUMP WARRANTY**

Performance Curves:

2900 rpm

Bronze bare shaft



Stainless steel bare shaft

Due to our program of continuous product development the manufacturer reserves the right to alter specifications without notice.