

Aussie Pumps

AUSSIE SPARES DIAGRAM & PARTS LIST

AUSSIE QP HIGH PRESSURE TRANSFER PUMPS:
 QP310SL/GX390, QP310SX/GX390
 QP402SL/GX390, QP402SX/GX390
 (AND ALL 1" PETROL KEYED SHAFT ENGINES)

RENEW OR UPGRADE

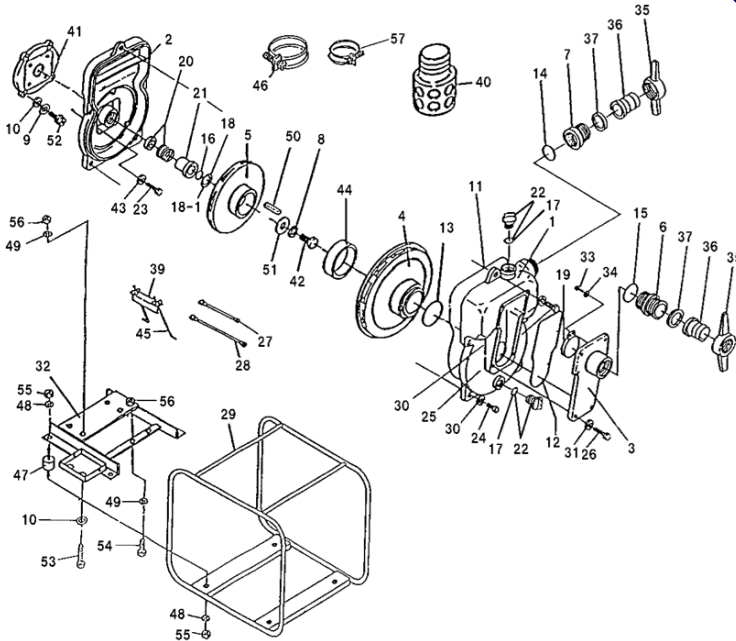
WITH AN AUSSIE WET END KIT

SL ONLY \$2,481

(P/N: QP310SL/KIT OR QP402SLKIT N/F)

SX ONLY \$2,481

(P/N: QP310SXKIT N/F OR QP402SXKIT)



Purchase a kit and **SAVE up to 40%**
 on buying individual parts

Position	Part number	Description	Qty reqd	List price EACH
1	Q1480-100010	CASING	1	\$1,612
2	Q4421-100020	MOUNTING FLANGE	1	\$1,128
3	Q9430-100160	SUCTION COVER	1	\$481
4	Q1461-000130	VOLUTE CASING SX (NOTE: liner ring (item 43) sold separately)	1	\$469
4	Q1445-000130	VOLUTE CASING SL (NOTE: liner ring (item 43) sold separately)	1	\$469
5	Q1476-060030	IMPELLER SX	1	\$385
	Q1445-060030	IMPELLER SL	1	\$385
6	Q079000-4030-11	NIPPLE (QP310 VERSION)	1	\$170
	Q079000-4040-11	NIPPLE (QP402 VERSION)	1	\$170
7	Q079890-4030-11	SOCKET (QP310 VERSION)	1	\$216
	Q079890-4040-11	SOCKET (QP402 VERSION)	1	\$216
8	Q045128-0100	SPRING WASHER	1	\$3
9	Q045128-0100	SPRING WASHER	4	\$3
10	Q040175-0100	WASHER	4	\$3
11	Q048935-3850	O-RING (CASING)	1	See kits
12	Q048935-2400	O-RING (SUCTION COVER)	1	See kits
13	Q048131-0950	O-RING (VOLUTE CASING)	1	See kits
14	Q048131-1000	O-RING (SOCKET)	1	See kits
15	Q048131-1100	O-RING (NIPPLE)	1	See kits
16	Q048220-0240	O-RING (MECH SEAL SLEEVE)	1	See kits
17	Q048035-0300	O-RING (FLOODING/DRAIN CAP)	2	See kits
18	Q085283-4525	ADJUST LINER	1	See kits
18-1	Q085285-4525	ADJUST LINER	1	\$12
19	Q9430-350350	CHECK VALVE	1	\$125
20	Q080611-3630	MECHANICAL SEAL	1	See kits
21	Q081188-3051	MECHANICAL SEAL SLEEVE	1	\$416
22	Q063121-1100ASS	FLOODING/DRAIN CAP	2	\$27
23	Q010505-0820	BOLT	4	\$3
24	Q010606-1240	BOLT	4	\$3
25	Q010606-1250	BOLT	1	\$3
26	Q010606-1040	BOLT	6	\$3
27	Q097206-9300	SHORT CORD	1	\$73
28	Q097206-9900	LONG CORD	1	\$231
30	Q045128-0120	SPRING WASHER	5	\$3
31	Q045128-0100	SPRING WASHER	6	\$3
32	Q1456-214020-0004	ENGINE BASE	1	\$319
33	Q014109-0616	SCREW	2	\$3
34	Q040145-0060	WASHER	2	\$3
35,36,37	QCOUPLING3"	HOSE COUPLING	2	\$111
38	Q096120-3026E	BATTERY	1	-
39	Q095021-1170-0014	BATTERY SET PLATE	1	\$24

Replacement Kits

Part number	Description	Positions	List Price
Q402-ORKT	O ring Kit	11, 12, 13, 14, 15, 16, 17	\$79
Q402REJ-2	Rejuvenation Kit	11, 12, 13, 14, 15, 16, 17, 18, 20	\$400

FIVE YEAR WARRANTY ON ALL AUSSIE QP PUMPS

... subject to the use of genuine Aussie replacement parts.

Position	Part number	Description	Qty reqd	List price EACH
40	QSTRAINER3"	STRAINER (poly)	1	\$84
	QSTRAINER4"	STRAINER (Aluminium)	1	\$116
41	Q4313-000600-14	CASING COVER SET PLATE	1	\$194
42	Q019115-0625	BOLT	1	\$5
43	Q045822-0080	SEAL WASHER	4	\$8
44	Q1445-081220	LINER RING	1	\$280
45	Q095021-1170A	BATTERY SET KIT	2	\$29
46	Q093225-4000	WIRE HOSE BAND	1	\$13
47a	Q072330-2040	CUSHION RUBBER (18mm)	4	\$25
47b	Q072330-3032	CUSHION RUBBER (35mm)	4	\$46
48	Q045128-0100	SPRING WASHER	8	\$3
49	Q045128-0100	SPRING WASHER	6	\$3
50	Q052004-0422	KEY	1	\$25
51	Q4334-691240	IMPELLER WASHER	1	\$9
52	Q019112-0625	BOLT	4	\$10
53	Q010606-1050	BOLT	4	\$3
54	Q010606-1045	BOLT	2	\$3
55/56	Q020545-0100	NUT	14	\$3
57	Q093225-0090	WIRE HOSE BAND	2	\$13



Two types of engine mounts used,
 check style before ordering.

PUMP PROTECTION

Pressure relief valve

(recommended when using a ball valve or quick action fire nozzles)

10 bar, adjustable, suits all QP fire & high pressure pumps, Inlet 1" BSP, Outlet 1" BSP
 Q078908-3410 \$290^{+GST}



RELIABLE PRODUCTS ... RELIABLE PEOPLE

Australian Pump Industries Pty Ltd

8 Solent Circuit, Norwest, NSW 2153

P: 02 8865 3500

aussiepumps.com.au

Aussie Pumps

AUSSIE SPARES DIAGRAM & PARTS LIST

AUSSIE QP HIGH PRESSURE TRANSFER PUMPS:
 QP310SL/L100, QP310SX/L100
 QP402SL/L100, QP402SX/L100
 (AND ALL 1" DIESEL KEYED SHAFT ENGINES)

RENEW OR UPGRADE

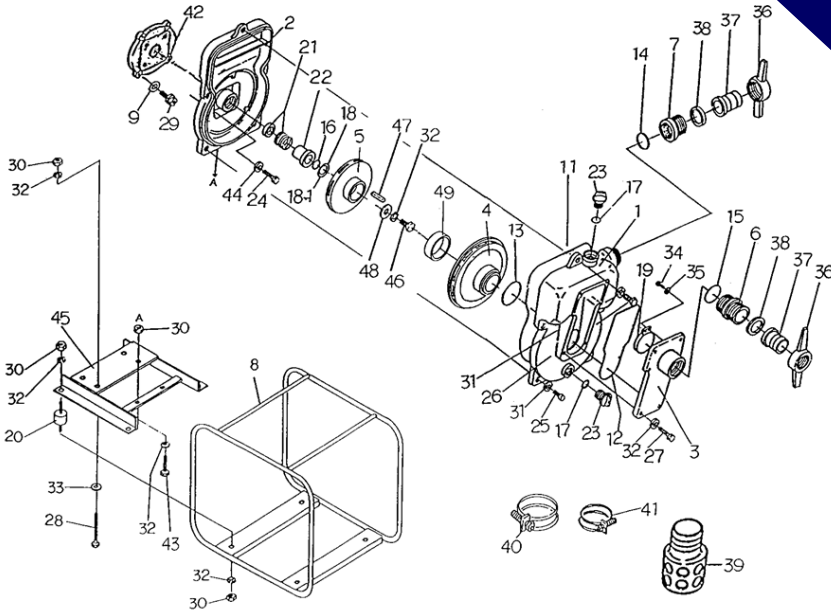
WITH AN AUSSIE WET END KIT

SL ONLY \$2,481

(P/N: QP310SLDKIT OR QP402SLKITN/L100)

SX ONLY \$2,481

(P/N: QP310SXDKITN/F OR QP402SXKITN/F)



Purchase a kit and **SAVE up to 40%**
 on buying individual parts

Position	Part number	Description	Qty reqd	List price EACH
1	Q1480-100010	CASING	1	\$1,612
2	Q4421-100020	MOUNTING FLANGE (SL L100 version)	1	\$1,128
	Q2379-100020	MOUNTING FLANGE (SX L100 version)		
3	Q9430-100160	SUCTION COVER	1	\$481
4	Q1445-000130	VOLUTE CASING SL (NOTE: liner ring (item 49) sold separately)	1	\$469
	Q1461-000130	VOLUTE CASING SX (NOTE: liner ring (item 49) sold separately)		
5	Q4418-000030	IMPELLER SL L100 17CM Diameter	1	\$385
	Q2379-060030	IMPELLER SX L100 20CM Diameter		
6	Q079000-4030-11	NIPPLE (QP310 VERSION)	1	\$170
	Q079000-4040-11	NIPPLE (QP402 VERSION)		
7	Q079890-4030-11	SOCKET (QP310 VERSION)	1	\$216
	Q079890-4040-11	SOCKET (QP402 VERSION)		
9	Q2376-214010-0004	SPRING WASHER	1	\$319
11	Q048935-3850	O-RING (CASING)	1	See kits
12	Q048935-2400	O-RING (SUCTION COVER)	1	See kits
13	Q048131-0950	O-RING (VOLUTE CASING)	1	See kits
14	Q048131-1000	O-RING (SOCKET)	1	See kits
15	Q048131-1100	O-RING (NIPPLE)	1	See kits
16	Q048220-0240	O-RING (MECH SEAL SLEEVE)	1	See kits
17	Q048035-0300	O-RING (PRIMING/DRAIN CAP)	2	See kits
18	Q085283-4525	ADJUST LINER	1	See kits
18-1	Q085285-4525	ADJUST LINER	1	\$12
19	Q9430-350350	CHECK VALVE	1	\$125
20a	Q072330-2040	CUSHION RUBBER (18mm)	4	\$25
20b	Q072330-3032	CUSHION RUBBER (35mm)	4	\$46
21	Q080611-3630	MECHANICAL SEAL	1	See kits
22	Q081188-3048	MECHANICAL SEAL SLEEVE (SX)	1	\$416
	Q081188-3051	MECHANICAL SEAL SLEEVE (SL)		
23	Q063121-1100ASS	PRIMING/DRAIN CAP WITH O-RING	2	\$27
24	Q010606-0820	BOLT	4	\$3
25	Q010606-1240	BOLT	4	\$3
26	Q010606-1250	BOLT	1	\$3
27	Q010606-1040	BOLT	6	\$3
28	Q010606-1045	BOLT	4	\$3
29	Q010606-1040	BOLT	2	\$3
30	Q020546-0100	NUT	14	\$3
31	Q045128-0120	SPRING WASHER	5	\$3
32	Q045128-0100	SPRING WASHER	24	\$3
33	Q040175-0100	WASHER	4	\$3
34	Q014109-0616	SCREW	2	\$3
35	Q040175-0060	WASHER	2	\$3
36, 37, 38	QCOUPLING3" or 4"	HOSE COUPLING	2	\$111
39	QSTRAINER3"	STRAINER (poly)	1	\$84
	QSTRAINER4"	STRAINER (Aluminium)	1	\$116

Replacement Kits

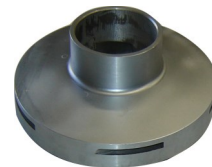
Part number	Description	Positions	List Price
Q402-ORKT	O ring Kit	11, 12, 13, 14, 15, 16, 17	\$79
Q402REJ-2	Rejuvenation Kit	11, 12, 13, 14, 15, 16, 17, 18, 21	\$400

Position	Part number	Description	Qty reqd	List price EACH
40	Q093225-4000	WIRE HOSE BAND	2	\$13
41	Q093225-0110	WIRE HOSE BAND	1	\$13
42	Q4313-000600-11	COVER SET PLATE SL ONLY	1	\$194
42	Q2378-000600-11	COVER SET PLATE SX ONLY	1	\$194
43	Q010505-1050	BOLT	4	\$3
44	Q045822-0080	SEAL WASHER	4	\$8
45	Q4420-214020-0004	ENGINE BASE	1	\$319
46	Q019115-0730	IMPELLER SET BOLT	1	\$32
47	Q052004-0422	KEY	1	\$25
48	Q4334-201240-11	IMPELLER WASHER	1	\$9
49	Q1445-081220	LINER RING	1	\$280
51	Q2379-00600	CASING COVER SET PLATE	1	\$194
	Q067002-6909	BALL BEARING	1	\$153
	Q2379-221280	BEARING SPACER	1	\$93
	Q079800-3040-0011	ADAPTOR 4"x3"	1	\$197

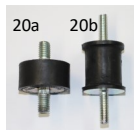
To ensure correct impeller is ordered compare vane type with those shown below;



SL Q4418-000030



SX Q2379-060030



Two types of engine mounts used, check style before ordering.

PUMP PROTECTION

Pressure relief valve

(recommended when using a ball valve or quick action fire nozzles)
10 bar, adjustable, suits all QP fire & high pressure pumps, Inlet 1" BSP, Outlet 1" BSP
 Q078908-3410 **\$290[†]GST**



Quality ISO 9001
 SAI GLOBAL