



AUSSIE GMP



AUSSIE GMP
HAS AN EXTENSIVE RANGE
OF BARE SHAFT PUMPS
AND MOTOR PUMPS
PETROL & DIESEL ENGINE
DRIVE PUMPS

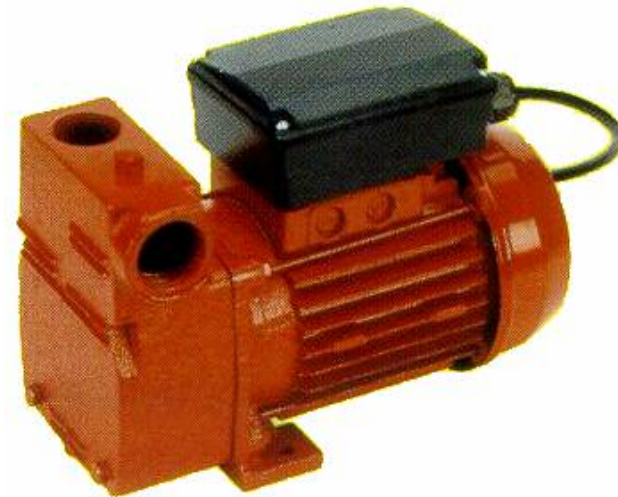


NOW ALSO AVAILABLE IN
ZINC FREE BRONZE & STAINLESS STEEL
FOR MARINE AND CORROSIVE
LIQUID APPLICATIONS.

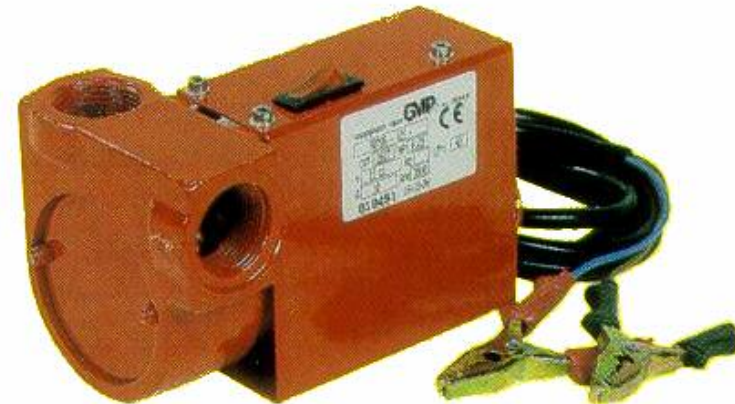
FULL RANGE OF SEALS AVAILABLE INCLUDING
NITRILE AND VITON, ALSO SILICON CARBIDE AND
TUNGSTEN CARBIDE FOR ABRASIVE LIQUIDS

FOR : WINERIES, FOOD AND BEVERAGE,
PLATING SHOPS, AQUACULTURE,
CHEM. PROCESS PLANTS

ACCESSORIES AVAILABLE INC. FLOW
METERS, DIESEL NOZZLES, AUTO SHUT
OFF GUNS HOSES, STRAINERS AND FITTINGS



AUSSIE GMP
DIESEL TRANSFER PUMPS
MODELS ROTOR, DOMUS
B1KQ-A and B1 1/2KQ-A
INSTALLATION & OPERATING
INSTRUCTIONS



AUSTRALIAN PUMP

Australian Pump Industries Pty Ltd ACN 0061 619 234
7 Gladstone Rd, Castle Hill NSW 2154 PO Box 6164, Baulkham Hills NSW 2153
Ph 02 9894 4144 Fx 02 9894 4240 email: lorenzw@ozemail.com.au



Australian Pump Industries Pty Ltd
Ph 02 9894 4144 Fx 02 9894 4240
email: lorenw@ozemail.com.au



Thank you for purchasing this Aussie GMP Diesel Transfer Pump which is designed for pumping DIESEL FUEL AND LIGHT OILS ONLY

Please read this leaflet thoroughly and follow the instructions carefully. In doing so you will ensure the safety of yourself and that of others around you and you can look forward to the pump giving you long and satisfactory service.

■ GUARANTEE

This Aussie Pump product is guaranteed against faulty manufacture for a period of twelve months from the date of purchase. Please keep your receipt as proof of purchase. This guarantee is invalid if the product is found to have been abused or tampered with in any way or not used for the purpose for which it was intended. Faulty goods should be returned to their place of purchase. No product can be returned to us without prior permission. This guarantee does not effect your statutory rights.

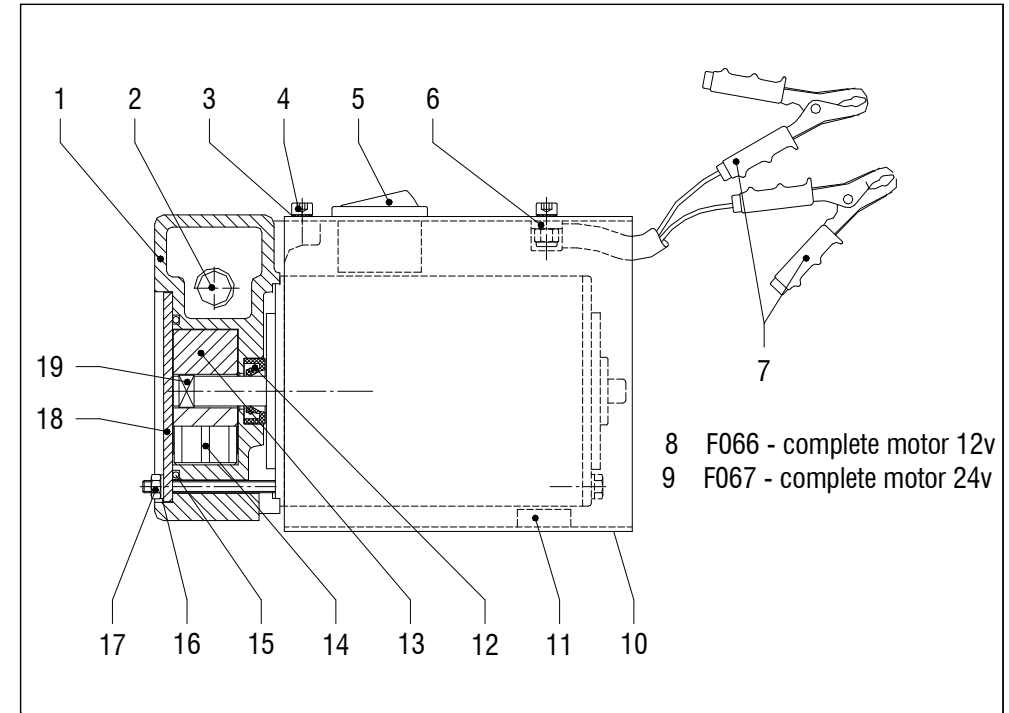
■ SAFETY PRECAUTIONS

1. Do not use this pump where there is a danger of fire.
2. Always disconnect from the electrical supply before priming the pump or carrying out any adjustments or servicing.
3. Do not use to pump any liquid other than diesel fuel or light oils.
4. Always ensure the ON/OFF switch, mounted on the rear of the motor housing is in the OFF (0) position before connecting to the power supply – battery or mains. This is to avoid the possibility of arcing taking place, thereby reducing the risk of fire.

■ SPECIFICATIONS

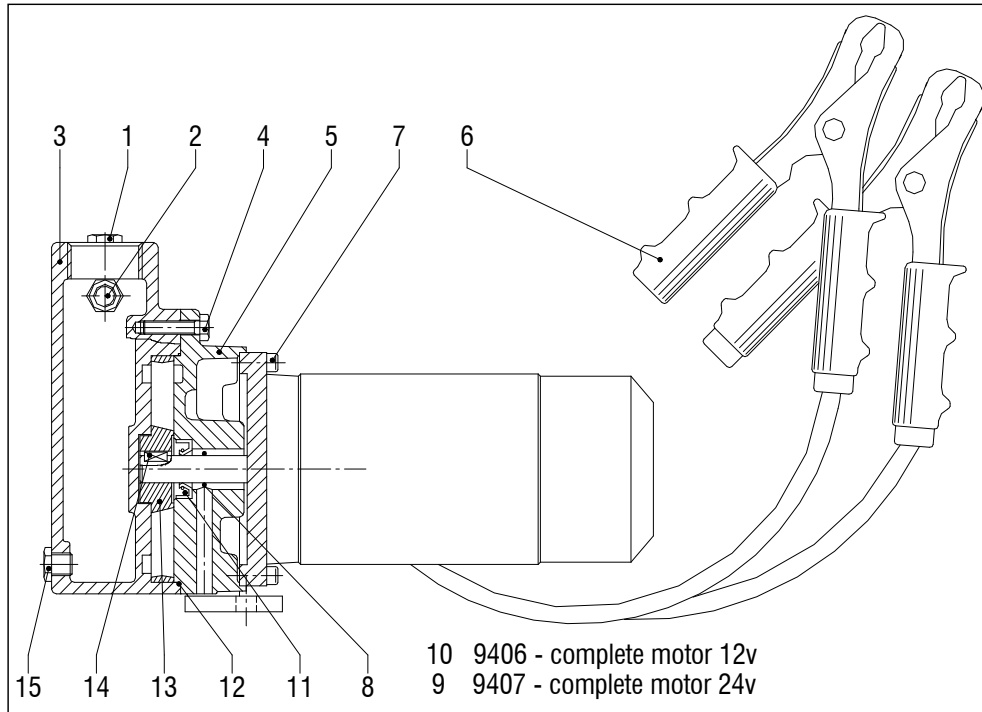
	ROTOR		DOMUS				B1KQ-A				B1½KQ-A	
Motor	12v	24v	12v	24v	240v	415v	12v	24v	240v	415v	240v	415v
Power rating	0.25hp		0.5hp				0.75hp 0.5hp				1hp	
Motor speed	3000rpm		2800rpm				3000rpm 2800rpm				2800rpm	
Current	10A	5A	3.6A	2.3A	2.3A	2A	4.1A	2.8A	4.1A	1.6A	1.8A	
Max flow	40 lpm		35 lpm				120 lpm				325 lpm	
Hose size	1" in/out		1" in/out				1" in/out				1½" in/out	

■ SPARE PARTS - ROTOR 12/24v



POS#	PART#	DESCRIPTION
1.	8400	PUMP BODY
2.	5478	BY-PASS
3.	7570	WASHER
4.	7099	SCREW
5.	8466	SWITCH
6.	7123	STOPE CABLE
7.	8482	CABLE WITH PLIERS
8.	F066	12v MOTOR
9.	F067	24v MOTOR
10.	8462	CARTER
11.	7804	WASHER
12.	8481	RING
13.	F068	ROTOR
14.	F069	BLADE
15.	8472	O-RING 3200
16.	5144	WASHER
17.	7144	NUT
18.	8463	COVER
19.	F070	KEY

■ SPARE PARTS - DOMUS



POS#	PART#	DESCRIPTION
1.	6209	1/4" TAP
2.	5478	BY-PASS
3.	5612	PUMP BODY
4.	6223	SCREW
5.	7035	BRACKET
6.	8482	12V CABLE WITH PLIERS
7.	7010	SCREW
8.	6048	O-RING
9.	9407	24V MOTOR
10.	9406	12V MOTOR
11.	6062	RETAINING RING
12.	6057	O-RING
13.	7789	IMPELLER
14.	7210	INOX KEY
15.	6208	DRAIN PLUG

■ ELECTRICAL CONNECTIONS

12v and 24v models

These models are battery operated and provided with alligator type clamps for attaching to the battery terminals.

The Rotor, Domus and B1KQ-A 12 volt models require a 12 volt battery and the 24 volt models require two x 12 volt batteries connected in series.

The RED clamp is connected to the POSITIVE terminal
The BLACK clamp is connected to the NEGATIVE terminal

Domus & KQ-A Series 240v models

⚠ WARNING: This appliance must be earthed

Connect the mains lead to a standard 240 volt (50Hz) electrical supply through an approved 10 amp plug, or a suitable fused isolator switch.

IMPORTANT: The wires in the mains lead are coloured in accordance with the following code:

Green & Yellow – Earth
Blue – Neutral
Brown – Live

As the colours of the flexible lead of this appliance may not correspond with the coloured markings identifying terminals in your plug, proceed as follow:

- Connect GREEN and YELLOW cord to terminal marked with a letter 'E' or Earth symbol \perp or coloured GREEN or GREEN and YELLOW
- Connect BROWN cord to terminal marked with a letter 'L' or coloured RED
- Connect BLUE cord to terminal marked with a letter 'N' or coloured BLACK

⚠ We strongly recommend that this machine is connected to the mains supply via a Residual Current Device (RDC)

If this appliance is fitted with a plug which moulded onto the electric cable (i.e. non-wireable) please note:

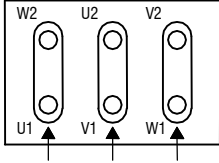
1. The plug must be thrown away if it is cut from the electric cable. There is a danger of electric shock if it is subsequently inserted into a socket outlet.
2. Never use the plug without the motor cover fitted.
3. If in any doubt, consult a qualified electrician DO NOT attempt any repairs yourself.

Domus & KQ/A Series 415v models

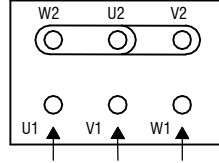
The following wiring diagrams are for the electrical connection of three phase motors.

Contact a qualified electrician to have this work carried out **DO NOT** attempt wiring up this motor yourself.

Delta Connection: lower voltage



Star Connection: higher voltage



ATTENTION ELECTRICAL INSTALLER – For three phase GMP motor pumps please note the following:

1. The motor must be turning in the correct direction as indicated by the arrow on the pump body (clockwise direction when viewing the motor from the fan side).
2. Connect wires to two phases and start the machine for one millisecond. If machine is running in the wrong direction reverse connections to correct direction.
3. If in doubt, remove fan cover and check fan rotation direction.

PLEASE NOTE – PUMP/MOTOR DAMAGE DUE TO CARELESS ELECTRICAL CONNECTION AND SUBSEQUENT REVERSE RUNNING OF MACHINE ARE NOT COVERED BY WARRANTY AND ARE THE RESPONSIBILITY OF THE INSTALLER.

INSTALLATION

It will be necessary to acquire 1" BSP inlet and outlet adapters in addition to the necessary suction hose prior to installation. These are readily available from your local dealer. A gun and outlet hose kit is provided with your pump.

Screw the inlet adapter firmly into the inlet port, ensuring it is adequately sealed. Attach the inlet hose using a worm drive clip or similar, ensuring the joint is airtight. The inlet port has an arrow embossed on the housing showing direction of flow.

NOTE:

1. It is important that the inlet hose is completely free of holes or other imperfections, otherwise the pump will not operate satisfactorily or may not operate at all.
2. The length of hose must not be greater than seven metres which is the maximum suction height for the pump.

Before attaching the outlet hose for the first time, it is necessary to prime the inlet side of the pump by pouring diesel fuel into the outlet port until all air has been expelled. It will not be necessary to carry out this procedure again unless the inlet pipes have been drained.

Screw in the outlet adapter and attach the hose in the same manner as that for the inlet.

OPERATING

WARNING

Ensure the ON/OFF switch, located at the rear of the pump, is set to the OFF (0) position **BEFORE** connecting the pump to the electrical supply. This is to avoid the possibility of arcing taking place, thereby reducing the risk of fire.

Domus & KQ/A Series 240v & 415v models

Connect the mains lead to the electrical supply, bearing in mind the warning above, and set the switch, at the rear of the pump, to the ON (I) position. The pump will operate and pumping will begin.

12v and 24v models

Ensure the battery is the right type for the pump i.e., 12v or 24v.

Ensure also that the battery terminals are clean and bearing in mind the warning above, firmly attach the RED clamp to the POSITIVE terminal and the BLACK clamp to the NEGATIVE terminal. Double check to ensure the clamps cannot be disturbed easily and that the setup is hidden or protected from passers by. Set the switch, at the rear of the terminal box, to ON (I).

THERMAL OVERLOAD PROTECTION

The motors of these pumps are provided with thermal overload protection.

In the event the pump cuts out due to overheating, always investigate the cause – this could be a blocked hose, or damage to the pump rotor.

The 240v & 415v models will restart automatically once they have cooled down sufficiently. Nevertheless, you should ALWAYS switch the pump OFF and allow to cool down.

The battery operated 12v and 24v pumps should be left to cool down for at least ten minutes before trying to restart the pump.

If the condition persists, further investigation is required to determine the cause.

MAINTENANCE

The pumps are of robust design require little or no maintenance except for ensuring that the electric power cables and clamps are always in good condition.

Ensure also that the hoses used are perfectly sound.

Store the pump in dry conditions, not exposed to the elements.