



AUSSIE SPARES DIAGRAM & PARTS LIST

**AUSSIE QP HIGH PRESSURE TRANSFER PUMPS: QP310SL/GX390, QP310SX/GX390
QP402SL/GX390, QP402SX/GX390
(AND ALL 1" KEYED SHAFT ENGINES)**

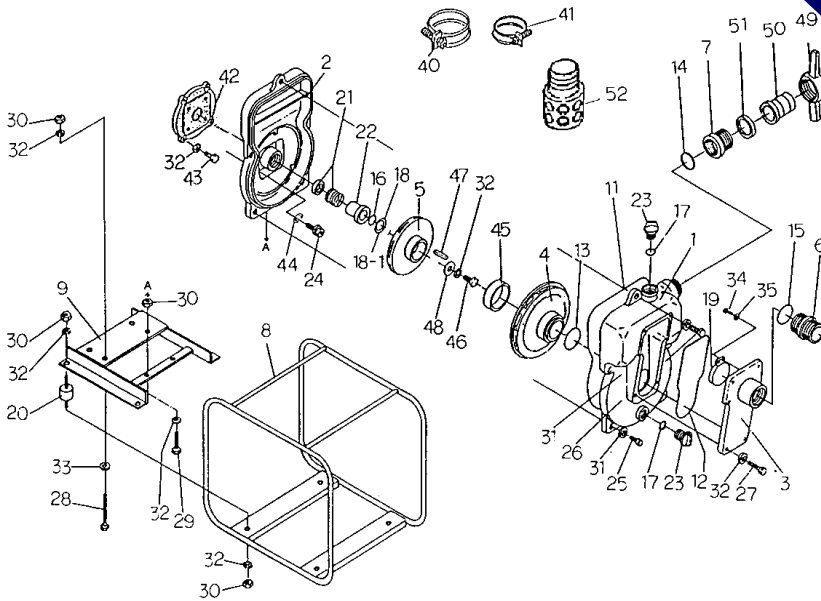
**RENEW OR UPGRADE
WITH AN AUSSIE WET END KIT**

SL ONLY \$1,868

(P/N: QP310SLKIT OR QP402SLKIT)

SX ONLY \$1,944

(P/N: QP310SXKIT OR QP402SXKIT)



Position	Part number	Description	Qty	Retail price
1	Q9430-100010	CASING	1	\$1,111
2	Q4421-100020	CASING COVER	1	\$778
3	Q9430-100160	SUCTION COVER	1	\$331
4	Q1445-000130	VOLUTE CASING SL	1	\$371
4	Q1461-000130	VOLUTE CASING SX	1	\$371
5	Q1445-060030	IMPELLER SL GX 240, GX340, GX390	1	\$304
5	Q4418-000030	IMPELLER SL L100	1	\$304
5	Q1461-060030	IMPELLER SX GX390	1	\$485
6	Q079000-4040-0011	NIPPLE	1	\$117
7	Q079890-4040-0011	SOCKET	1	\$148
8	Q1434-214010-0014	FRAME	1	\$234
9	Q4420-214010-0004	ENGINE BASE	1	\$219
11	Q048935-3850	O-RING (CASING)	1	\$89
12	Q048935-2380	O-RING (SUCTION COVER)	1	\$52
13	Q048131-0950	O-RING (VOLUTE CASING)	1	\$12
14	Q048131-1000	O-RING (SOCKET)	1	\$20
15	Q048131-1100	O-RING (NIPPLE)	1	\$23
16	Q048220-0240	O-RING (MECH SEAL SLEEVE)	1	\$9
17	Q048035-0300	O-RING(FLOODING/DRAIN CAP)	2	\$5
18	Q085283-4525	ADJUST LINER	1	\$8
18-1	Q085285-4525	ADJUST LINER	1	\$8
19	Q9430-350350	CHECK VALVE	1	\$85
20	Q072330-2040	CUSHION RUBBER	4	\$16
21	Q080611-3630	MECHANICAL SEAL	1	\$235
22	Q081188-3051	MECHANICAL SEAL SLEEVE	1	\$286
23	Q063121-1100ASSY	FLOODING/DRAIN CAP WITH O-RING	2	\$20
24	Q010505-0820	BOLT	4	\$1
25	Q010505-1240	BOLT	4	\$5
26	Q010505-1250	BOLT	1	\$5
27	Q010505-1040	BOLT	6	\$3
28	Q010505-1045	BOLT	4	\$3
29	Q010505-1040	BOLT	2	\$3
30	Q020545-0100	NUT	14	\$1
31	Q045125-0120	SPRING WASHER	5	\$1
32	Q045125-0100	SPRING WASHER	24	\$1
33	Q040145-0100	WASHER	4	\$1
34	Q014109-0616	SCREW	2	\$1
35	Q040145-0060	WASHER	2	\$1

**PURCHASE A KIT AND SAVE UP TO 40%
ON BUYING INDIVIDUAL PARTS**

Replacement Kits

Part number	Description	Positions	Retail Price
Q402-ORKIT	O ring Kit	11, 12, 13, 14 15, 16, 17	\$61.60
Q402REJ	Rejuvenation Kit	11, 13, 16, 18, 21	\$297

FIVE YEAR WARRANTY ON ALL AUSSIE QP PUMPS

... subject to the use of genuine Aussie replacement parts.

Position	Part number	Description	Qty	Retail price
40	Q093225-4000	WIRE HOSE BAND	2	\$25
41	Q093225-0110	WIRE HOSE BAND	1	\$25
42	Q4313-000600-0011	CASING COVER SET PLATE	1	\$132
43	Q019116-0625	BOLT	4	\$1
44	Q045822-0080	SEAL WASHER	4	\$20
45	Q1445-081220	LINER RING	1	\$192
46	Q019115-0730	IMPELLER SET BOLT	1	\$7
47	Q052004-0422	KEY	1	\$16
48	Q4334-201240-0011	IMPELLER WASHER	1	\$5
49, 50, 51	QCOUPLING3" or 4"	HOSE COUPLING	2	\$73
52	Q074221-2100	STRAINER	2	\$60
	Q079800-3040-0011	ADAPTOR 4"x3"	1	\$161

To ensure correct impeller is ordered compare vane type with those shown below;



SL Q1445-060030



SX Q1461-060030

RELIABLE PRODUCTS ... RELIABLE PEOPLE





AUSSIE SPARES DIAGRAM & PARTS LIST

**AUSSIE QP HIGH PRESSURE TRANSFER PUMPS: QP3310SL/GX390, QP3310SX/GX390
(INTRODUCED SEPT 2010)
(AND ALL 1" KEYED SHAFT ENGINES)**

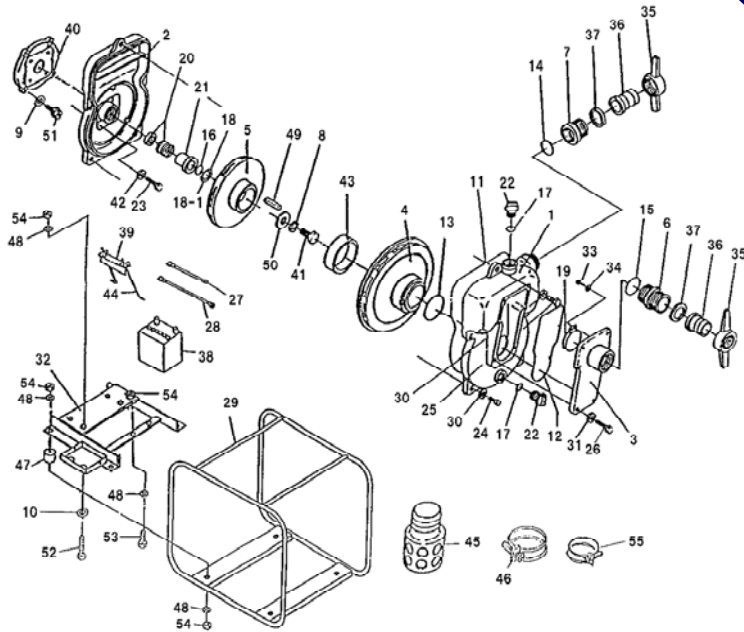
**RENEW OR UPGRADE
WITH AN AUSSIE WET END KIT**

SL ONLY \$

(P/N: QP3310SLKIT)

SX ONLY \$

(P/N: QP3310SXKIT)



**PURCHASE A KIT AND SAVE UP TO 40%
ON BUYING INDIVIDUAL PARTS**

Position	Part number	Description	Qty	Retail price
1	9430-100010	CASING	1	\$1,111
2	4421-100020	CASING COVER	1	\$778
3	9430-100160	SUCTION COVER	1	\$331
4	1461-000130	VOLUTE CASING SX	1	\$371
4		VOLUTE CASING SL		\$371
5	1476-060030	IMPELLER SX	1	\$304
5		IMPELLER SL		\$304
6	079000-4030-0011	NIPPLE	1	\$485
7	079890-4030-0011	SOCKET	1	\$117
8	045125-0100	SPRING WASHER	1	\$1
9	045125-0100	SPRING WASHER	4	\$1
10	040145-0100	WASHER	4	\$1
11	048935-3850	O-RING (CASING)	1	\$89
12	048935-2400	O-RING (SUCTION COVER)	1	\$52
13	048131-0950	O-RING (VOLUTE CASING)	1	\$12
14	048131-1000	O-RING (SOCKET)	1	\$20
15	048131-1100	O-RING (NIPPLE)	1	\$23
16	048220-0240	O-RING (MECH SEAL SLEEVE)	1	\$9
17	048035-0300	O-RING (FLOODING/DRAIN CAP)	2	\$5
18	085283-4525	ADJUST LINER	1	\$8
18-1	085285-4525	ADJUST LINER	1	\$8
19	9430-350350	CHECK VALVE	1	\$85
20	080611-3630	MECHANICAL SEAL	1	\$235
21	081188-3051	MECHANICAL SEAL SLEEVE	1	\$286
22	063121-1100ASSY	FLOODING/DRAIN CAP	2	\$20
23	010505-0820	BOLT	4	\$1
24	010505-1240	BOLT	4	\$5
25	010505-1250	BOLT	1	\$5
26	010505-1040	BOLT	6	\$3
27	097209-9300	SHORT CORD	1	
28	097209-9900	LONG CORD	1	
29		FRAME	1	\$234
30	045125-0120	SPRING WASHER	5	\$1
31	045125-0100	SPRING WASHER	6	\$1
32	1456-214020-0004	ENGINE BASE	1	\$219
33	014109-0616	SCREW	2	\$1
34	040145-0060	WASHER	2	\$1
35,36,37	QC0UPLING3"	HOSE COUPLING	2	\$73
38	096120-3026E	BATTERY	1	
39	095021-1170-0004	BATTERY SET PLATE	1	

Replacement Kits

Part number	Description	Positions	Retail Price
Q402-ORKIT	O ring Kit	11, 12, 13, 14, 15, 16, 17	\$61.60
Q402REJ	Rejuvenation Kit	11, 13, 16, 18, 20	\$297

FIVE YEAR WARRANTY ON ALL AUSSIE QP PUMPS

... subject to the use of genuine Aussie replacement parts.

Position	Part number	Description	Qty	Retail price
40	4313-000600-0011	CASING COVER SET PLATE	1	\$132
41	019115-0625	BOLT	1	\$1
42	045822-0080	SEAL WASHER	4	\$20
43	1445-081220	LINER RING	1	\$192
44	095021-1170A	BATTERY SET KIT	2	
45	074221-1080	STRAINER	1	\$60
46	093225-3000	WIRE HOSE BAND	1	\$25
47	072330-2040	CUSHION RUBBER	4	\$16
48	045125-0100	SPRING WASHER	14	\$1
49	052004-0422	KEY	1	\$16
50	4334-201240-0011	IMPELLER WASHER	1	\$5
51	019116-0625	BOLT	4	\$7
52	010505-1050	BOLT	4	\$3
53	010505-1045	BOLT	2	\$3
54	020545-0100	NUT	14	\$1
55	093225-0090	WIRE HOSE BAND	2	\$25

RELIABLE PRODUCTS ... RELIABLE PEOPLE

