

Aussie Pumps

AUSSIE SPARES DIAGRAM & PARTS LIST

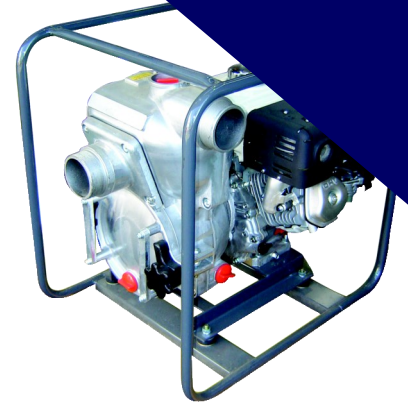
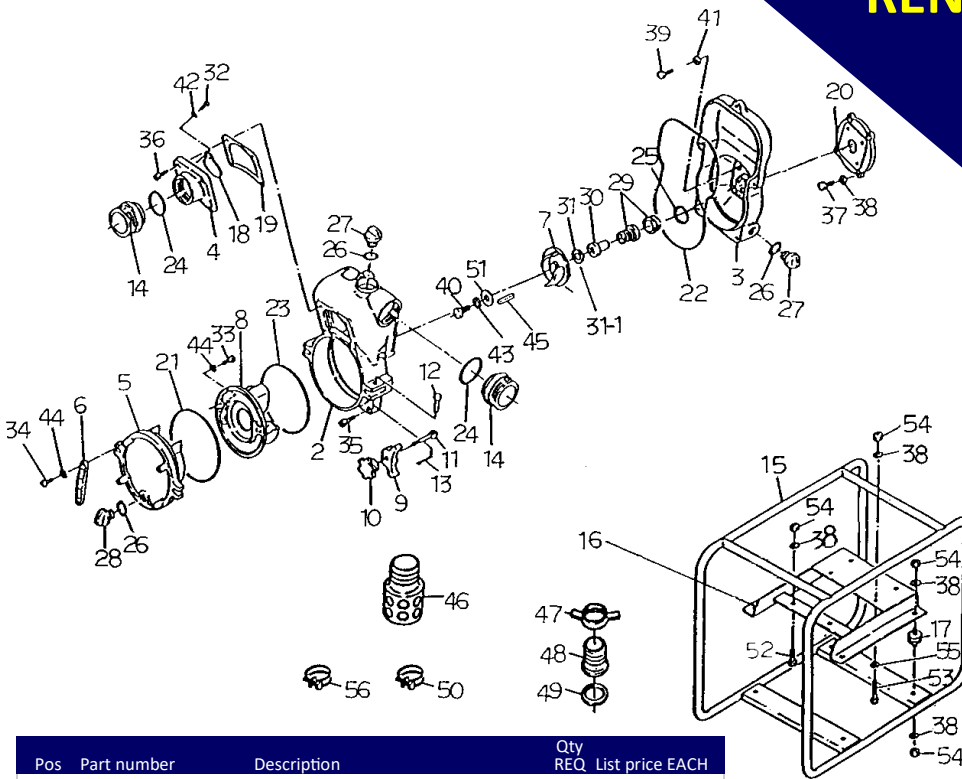
AUSSIE QP TRASH PUMPS: QP301T/GX240
& QP301T/GX390

RENEW OR UPGRADE

YOUR PUMP WITH AN
AUSSIE WET END KIT

ONLY **\$2,044**

(P/N: QP301TKIT
SUITS 1" KEYED SHAFT)



Pos	Part number	Description	Qty REQ	List price EACH
2	Q1317-100010	CASING	1	\$1,656
3	Q1317-100020	MOUNTING FLANGE	1	\$1,504
4	Q1317-100160	SUCTION COVER	1	\$420
5	Q1247-100170	DRAIN COVER	1	\$655
6	Q1247-100250	DRAIN COVER HANDLE	2	\$58
7	Q4334-000030	IMPELLER	1	\$375
8	Q1317-000130	VOLUTE CASING	1	\$357
9	Q1247-000200-0014	DRAIN COVER PUSH PLATE	2	\$54
10	Q1247-000190-0014	DRAIN COVER SET HANDLE	2	\$54
11	Q1247-690270	HINGE BOLT	2	\$70
12	Q1247-680280	HINGE PIN	2	\$11
13	Q064110-0430	SPLIT PIN	2	\$3
14	Q079000-3030-0011	NIPPLE	2	\$224
17	Q072330-2040	CUSHION RUBBER	4	\$25
18	Q1317-350350	CHECK VALVE	1	\$110
19	Q1317-330370	SUCTION COVER PACKING	1	See kits
20	Q4313-000600-0011	CASING COVER SET PLATE	1	\$194
21	Q048935-2400	O-RING (DRAIN COVER)	1	See kits
22	Q048935-3970	O-RING (CASING)	1	See kits
23	Q048931-2300	O-RING (VOLUTE CASING)	1	See kits
24	Q048131-0800	O-RING (NIPPLE)	2	See kits
25	Q048220-0240	O-RING (MECHANICAL SEAL SLEEVE)	1	See kits
26	Q048035-0300	O-RING (PRIMING DRAIN CAP)	3	See kits
27	Q063121-1100ASS	PRIMING CAP WITH O-RING	2	\$27
28	Q063121-1100ASS	DRAIN CAP WITH O-RING	1	\$27
29	Q080144-3530	MECHANICAL SEAL	1	See kits
30	Q081188-3051	MECHANICAL SEAL SLEEVE	1	\$416
31	Q085283-4525	ADJUST LINER	1	See kits
31-1	Q085285-4525	ADJUST LINER	1	\$12
32	Q014109-0510	SCREW	2	\$3
33	Q014109-0820	SCREW	2	\$8
34	Q014205-0825	SCREW	4	\$3
35	Q013215-1235	CAP SCREW	5	\$10
36	Q013215-1030	CAP SCREW	4	\$8
37	Q019112-0625	BOLT	4	\$3
38	Q045128-0100	SPRING WASHER	18	\$3

Purchase a kit and **SAVE** up to **40%**
on buying individual parts

Replacement Kits

Part number	Description	Positions	List Price
Q301T-ORKTO	ring Kit	21, 22, 23, 24, 25, 26,	\$79
Q301TREJ-2	Rejuvenation Kit	19, 21,22, 23, 24, 25, 26, 29, 31	\$589

Pos	Part number	Description	Qty REQ	List price EACH
39	Q010505-0820	BOLT	4	\$3
40	Q019111-0730	IMPELLER SET BOLT	1	\$29
41	Q045822-0080	SEAL WASHER	4	\$8
42	Q040175-0050	WASHER	2	\$3
43	Q045128-0120	SPRING WASHER	1	\$3
44	Q045128-0080	SPRING WASHER	6	\$3
45	Q052004-0422	KEY	1	\$25
46	QSTRAINER301T	STRAINER	1	\$107
47, 48, 49	QC0UPLING3"	COUPLING KIT	2	\$111
50	Q093225-3000	WIRE HOSE BAND	1	\$13
51	Q4334-691240	IMPELLER WASHER	1	\$13
52	Q010606-1035	BOLT	2	\$3
53	Q010606-1045	BOLT	4	\$3
54	Q020545-0100	NUT	14	\$3
55	Q040175-0100	WASHER	4	\$3
56	Q093225-0090	WIRE HOSE BAND	2	\$13

FIVE YEAR WARRANTY ON ALL AUSSIE QP PUMPS
... subject to the use of genuine Aussie replacement parts.

RELIABLE PRODUCTS ... RELIABLE PEOPLE



Aussie Pumps

AUSSIE SPARES DIAGRAM & PARTS LIST

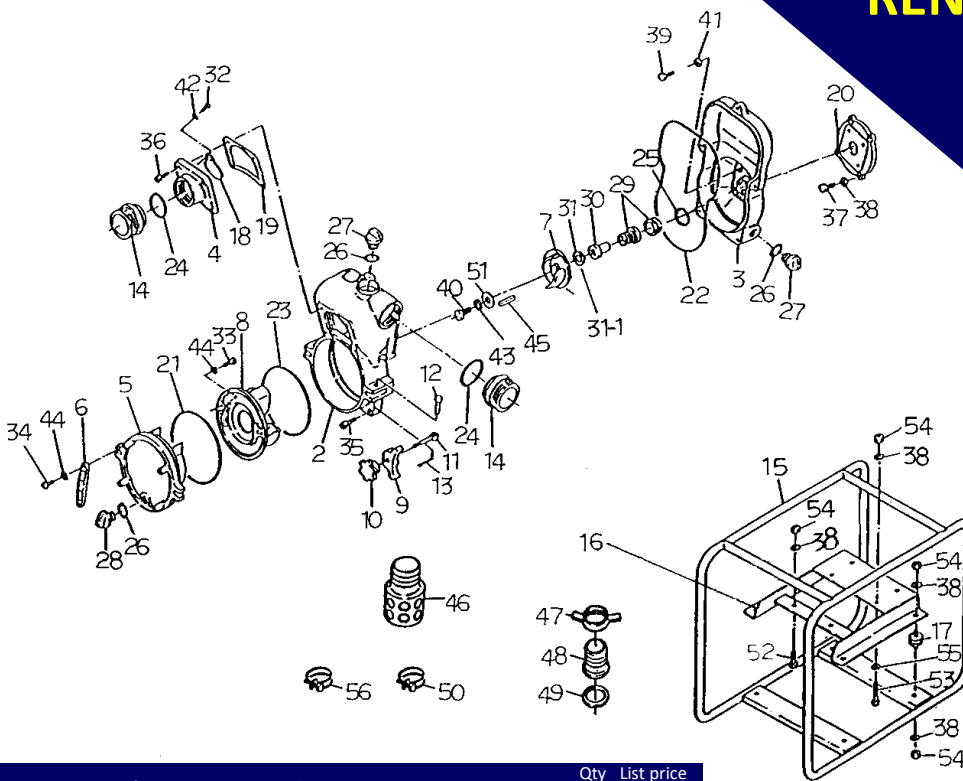
AUSSIE QP TRASH PUMPS: QP301T/L70 & QP301T/L100
(AND ALL 1" SHAFT DIESEL ENGINES)

RENEW OR UPGRADE

YOUR PUMP WITH AN
AUSSIE WET END KIT

ONLY \$2,044

(P/N: QP301TKIT N/F
SUITS 1" KEYED SHAFT)



Purchase a kit and **SAVE up to 40%**
on buying individual parts

Replacement Kits

Part number	Description	Positions	List Price
Q301T-ORKT	O ring Kit	21, 22, 23, 24, 25, 26,	\$79
Q301TREJ-2	Rejuvenation Kit	19, 21,22, 23, 24, 25, 26, 29, 31	\$589

Position	Part number	Description	Qty REQ	List price EACH
36	Q013215-1030	CAP SCREW	4	\$8
37	Q019112-0625	BOLT	4	\$3
38	Q045128-0100	SPRING WASHER	18	\$3
39	Q010505-0820	BOLT	4	\$3
40	Q019111-0730	IMPELLER SET BOLT	1	\$32
41	Q045822-0080	SEAL WASHER	4	\$8
42	Q040175-0050	WASHER	2	\$3
43	Q045128-0120	SPRING WASHER	1	\$3
44	Q045128-0080	SPRING WASHER	6	\$3
45	Q052004-0422	KEY	1	\$25
46	QSTRAINER301T	STRAINER	1	\$107
47, 48, 49	QCOUPLING3"	COUPLING KIT	2	\$111
50	Q093225-3000	WIRE HOSE BAND	1	\$13
51	Q4334-691240	IMPELLER WASHER	1	\$13
52	Q010606-1035	BOLT	2	\$3
53	Q010606-1045	BOLT	4	\$3
54	Q020545-0100	NUT	14	\$3
55	Q040175-0100	WASHER	4	\$3
56	Q093225-0090	WIRE HOSE BAND	2	\$13

Pos	Part number	Description	Qty REQ	List price EACH
2	Q1317-100010	CASING	1	\$1,656
3	Q1317-100020	MOUNTING FLANGE (L70)	1	\$1,504
3	Q7301-100020	MOUNTING FLANGE (L100)	1	\$1,504
4	Q1317-100160	SUCTION COVER	1	\$420
5	Q1247-100170	DRAIN COVER	1	\$655
6	Q1247-100250	DRAIN COVER HANDLE	2	\$58
7	Q2361-000030	IMPELLER (L70) (outer dimension 124mm)	1	\$375
7	Q4334-000030	IMPELLER (L100) (outer dimension 128mm)	1	\$375
8	Q1317-000130	VOLUTE CASING	1	\$357
9	Q1247-000200-0014	DRAIN COVER PUSH PLATE	2	\$54
10	Q1247-000190-0014	DRAIN COVER SET HANDLE	2	\$54
11	Q1247-690270	HINGE BOLT	2	\$70
12	Q1247-680280	HINGE PIN	2	\$11
13	Q064110-0430	SPLIT PIN	2	\$3
14	Q079000-3030-0011	NIPPLE	2	\$224
17	Q072330-2040	CUSHION RUBBER (L70)	4	\$25
17	Q072330-3032	CUSHION RUBBER (L100)	4	\$46
18	Q1317-350350	CHECK VALVE	1	\$110
19	Q1317-330370	SUCTION COVER PACKING	1	See kits
20	Q4313-000600-0011	CASING COVER SET PLATE	1	\$194
21	Q048935-2400	O-RING (DRAIN COVER)	1	See kits
22	Q048935-3970	O-RING (CASING)	1	See kits
23	Q048931-2300	O-RING (VOLUTE CASING)	1	See kits
24	Q048131-0800	O-RING (NIPPLE)	2	See kits
25	Q048220-0240	O-RING (MECHANICAL SEAL SLEEVE)	1	See kits
26	Q048035-0300	O-RING (PRIMING DRAIN CAP)	3	See kits
27	Q063121-1100ASS	PRIMING CAP WITH O-RING	2	\$27
28	Q063121-1100ASS	DRAIN CAP WITH O-RING	1	\$27
29	Q080144-3530	MECHANICAL SEAL	1	See kits
30	Q081188-3051	MECHANICAL SEAL SLEEVE	1	\$416
31	Q085283-4525	ADJUST LINER	1	See kits
31-1	Q085285-4525	ADJUST LINER	1	\$12
32	Q014109-0510	SCREW	2	\$3
33	Q014109-0820	SCREW	2	\$8
34	Q014205-0825	SCREW	4	\$3
35	Q013215-1235	CAP SCREW	5	\$10

FIVE YEAR WARRANTY ON ALL AUSSIE QP PUMPS

... subject to the use of genuine Aussie replacement parts.

RELIABLE PRODUCTS ... RELIABLE PEOPLE

