



AUSSIE SPARES DIAGRAM & PARTS LIST

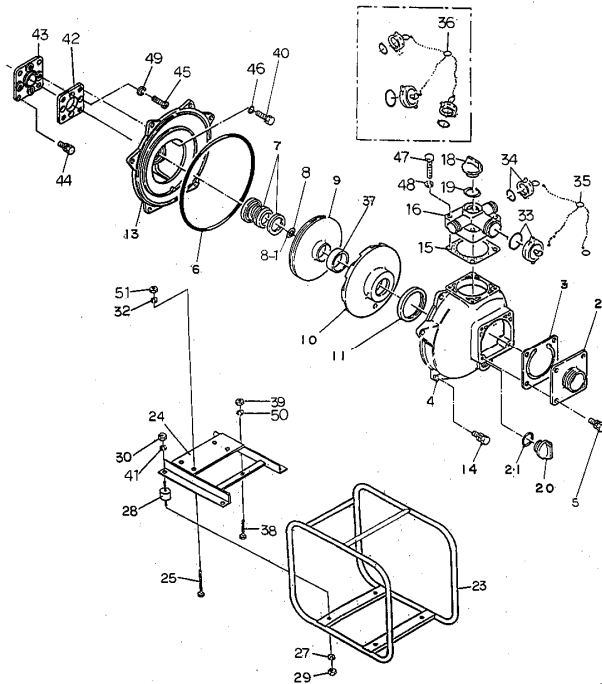
AUSSIE QP FIRE PUMPS: AUSSIE FIRE CAPTAIN PLUS (2" & 3" FIRE PUMPS WITH ENGINES 8HP AND LARGER)

RENEW OR UPGRADE

YOUR PUMP WITH AN AUSSIE WET END KIT

\$846

(P/N: QP205SLKIT1" P
SUITS ANY 1" SCREWED
SHAFT ENGINE)



PURCHASE A KIT AND SAVE UP TO 40% ON BUYING INDIVIDUAL PARTS

Position	Part number	Description	Qty	Retail price
2	Q1803-100160	2" SUCTION COVER	1	\$65
2	Q4725-060160-0011	1.5" SUCTION COVER	1	\$123
2	Q4904-000160	2.5" SUCTION COVER	1	\$123
3	Q1378-350350	CHECK VALVE	1	\$64
4	Q4364-100010	CASING	1	\$254
5	Q018105-0825	BOLT SET WITH SPRING WASHER	4	\$1
6	Q048935-2550	O-RING (CASING)	1	\$25
7	Q080611-3325	MECHANICAL SEAL (W shaft GX270)	1	\$122
7	Q080311-2930	MECHANICAL SEAL (1" P screwed shaft)	1	\$279
8	Q085283-3020	ADJUST LINER (W shaft GX270)	1	\$7
8	Q085283-2013	ADJUST LINER (1" P screwed shaft)	1	\$7
8-1	Q085285-3020	ADJUST LINER (W shaft GX270)	1	\$7
8-1	Q085285-2013	ADJUST LINER (1" P screwed shaft)	1	\$7
9	Q1955-060030	IMPELLER (W shaft GX270)	1	\$263
9	Q1883-060030	IMPELLER (1" P screwed shaft)	1	\$312
10	Q1803-100130	VOLUTE CASING	1	\$94
11	Q1378-330620	VOLUTE CASING PACKING	1	\$10
13	Q4359-100020	CASING COVER (W shaft GX270)	1	\$198
13	Q1988-100020	CASING COVER (1" P screwed shaft)	1	\$206
14	Q018105-0825	BOLT SET WITH SPRING WASHER	6	\$1
15	Q1803-330360	DELIVERY COVER PACKING	1	\$13
16	Q1814-100090	DELIVERY COVER (3way Outlet)	1	\$76
16	Q1803-000090	DELIVERY ELBOW 2"	1	\$166
16	Q4904-000090	DELIVERY ELBOW 2.5"	1	\$180
18	Q063121-1100ASSY	FLOODING CAP WITH O-RING	1	\$18
19	Q048035-0300	O-RING (FLOODING CAP)	1	\$5
20	Q063121-1100ASSY	DRAIN CAP WITH O-RING	1	\$19
21	Q048035-0300	O-RING (DRAIN CAP)	1	\$5
23	QFRAMEL48GAL	FRAME	1	\$286
24	Q1867-214020-0004	ENGINE BASE (GX270)	1	\$126
24	Q1988-214021-0004	ENGINE BASE (GX390)	1	\$139
25	Q010505-1045	BOLT	4	\$1
27	Q045125-0100	SPRING WASHER	4	\$1
28	Q072330-2040	CUSHION RUBBER	4	\$16
29	Q020545-0100	NUT	4	\$1
30	Q020545-0100	NUT	4	\$1
32	Q045125-0100	SPRING WASHER	4	\$1
36	Q1814-209660ASSY	CAPS & CHAINS	1	\$73
37	Q1803-521220	LINER RING	1	\$33
38	Q010505-0850	BOLT	1	\$1
39	Q020545-0080	NUT	1	\$1
40	Q010505-0820	BOLT	4	\$1
41	Q045125-0100	SPRING WASHER	4	\$1

Replacement Kits

Part number	Description	Positions	Retail Price
Q205-ORKIT	O ring Kit	6, 11, 15, 19, 21, 37	\$61.60
Q205SLREJ	Rejuvenation Kit (W shaft)	6, 7, 8, 11, 37	\$105.00
Q205SLREJGX390	Rejuvenation Kit (1" P screwed shaft)	6, 7, 8, 11, 37	\$259.00

Position	Part number	Description	Qty	Retail price
42	Q1369-000630-0011	CASING COVER SET PLATE : B (w shaft GX270)	1	\$99
42	Q4357-000600-0011	CASING COVER SET PLATE : B (1" P screwed shaft)	1	\$99
43	Q1369-000600-0011	CASING COVER SET PLATE : A	1	\$99
44	Q019116-0625	BOLT SET WITH SPRING WASHER (W shaftGX270)	4	\$1
44	Q019116-0625	BOLT (1" P screwed shaft)	4	\$1
45	Q014105-0815	SCREW	4	\$1
	Q010505-1050	BOLT	4	\$1
46	Q045822-0080	SEAL WASHER	4	\$1
47	Q010505-0845	BOLT	4	\$1
48	Q045125-0080	SPRING WASHER	4	\$1
49	Q045125-0080	SPRING WASHER	4	\$1
50	Q045125-0080	SPRING WASHER	1	\$1
51	Q020545-0100	NUT	4	\$1

To ensure correct impeller is ordered measure boss as shown below:



W shaft impeller for GX270

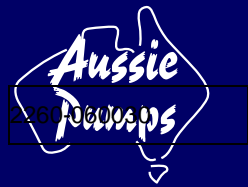


1" P shaft impeller

See next page for 1" Q (keyed) shaft pumps

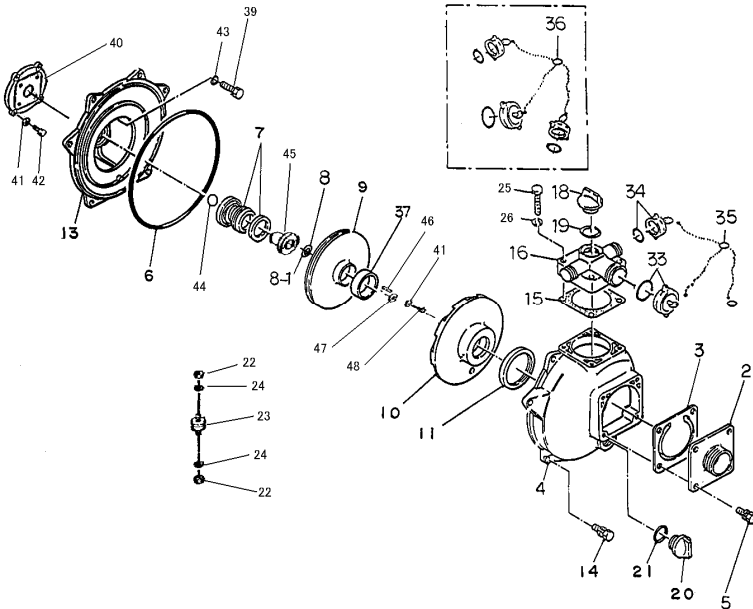
RELIABLE PRODUCTS ... RELIABLE PEOPLE





AUSSIE SPARES DIAGRAM & PARTS LIST

AUSSIE QP FIRE PUMPS: AUSSIE FIRE CAPTAIN PLUS (1" Q KEYED SHAFT PUMPS)



Position	Part number	Description	Qty	Retail price
2	Q1803-100160	2" SUCTION COVER	1	\$65
2	Q4725-060160-0011	1.5" SUCTION COVER	1	\$123
2	Q4904-000160	2.5" SUCTION COVER	1	\$123
3	Q1378-350350	CHECK VALVE	1	\$64
4	Q4364-100010	CASING	1	\$254
5	Q018105-0825	BOLT SET WITH SPRING WASHER	4	\$1
6	Q048935-2550	O-RING (CASING)	1	\$25
7	Q080311-2930	MECHANICAL SEAL (1" shaft)	1	\$279
8	Q085283-4525	ADJUST LINER (1" Q keyed shaft)	1	\$7
8-1	Q085285-4525	ADJUST LINER (1" Q keyed shaft)	1	\$7
9	Q2260-060030	IMPELLER (1" Q keyed shaft)	1	\$312
10	Q1803-100130	VOLUTE CASING	1	\$94
11	Q1378-330620	VOLUTE CASING PACKING	1	\$10
13	Q1988-100020	CASING COVER (1" Q keyed shaft)	1	\$206
14	Q018105-0825	BOLT SET WITH SPRING WASHER	6	\$1
15	Q1803-330360	DELIVERY COVER PACKING	1	\$13
16	Q1814-100090	DELIVERY COVER (3 way Outlet)	1	\$76
16	Q1803-000090	DELIVERY ELBOW 2"	1	\$166
16	Q4904-000090	DELIVERY ELBOW 2.5"	1	\$180
18	Q063121-1100ASSY	FLOODING CAP WITH O-RING	1	\$18
19	Q048035-0300	O-RING (FLOODING CAP)	1	\$5
20	Q063121-1100ASSY	DRAIN CAP WITH O-RING	1	\$19
21	Q048035-0300	O-RING (DRAIN CAP)	1	\$5
22	Q020545-0100	NUT (CUSHION RUBBER))	8	\$1
23	Q072330-2546	CUSHION RUBBER	4	\$16
24	Q045125-0100	SPRING WASHER (CUSHION RUBBER)	8	\$1
25	Q010505-0845	BOLT	4	\$1
26	Q045125-0080	SPRING WASHER	4	\$1
36	Q1814-209660ASSY	CAPS & CHAINS	1	\$73
37	Q1803-521220	LINER RING	1	\$33
39	Q010505-0825	BOLT	4	\$1
40	Q4357-000600-0011	CASING COVER SET PLATE	1	\$99
41	Q045129-0070	SPRING WASHER	5	\$1
42	Q019116-0625	BOLT	4	\$1
43	Q045822-0080	SEAL WASHER	4	\$1
44	Q048220-0240	O-RING (MECHANICAL SEAL SLEEVE)	1	\$5
45	Q081188-5449	MECHANICAL SEAL SLEEVE (1" Q shaft)	1	\$65
46	Q052004-0422	KEY	1	\$5
47	Q1412-201240-0011	IMPELLER WASHER	1	\$5
48	Q010709-0632	BOLT	1	\$1

**PURCHASE A KIT AND SAVE UP TO 40%
ON BUYING INDIVIDUAL PARTS**

Replacement Kits

Part number	Description	Positions	Retail Price
Q205-ORKIT	O ring Kit	6, 11, 15, 19, 21, 37	\$61.60
Q205SLREJGX390	Rejuvenation Kit (1" P screwed shaft)	6, 7, 11, 37	\$259.00

Note: Adjustable liner supplied in the rejuvenation kit is not suitable for the keyed shaft version. If required order adjustable liner as a separate item.

