



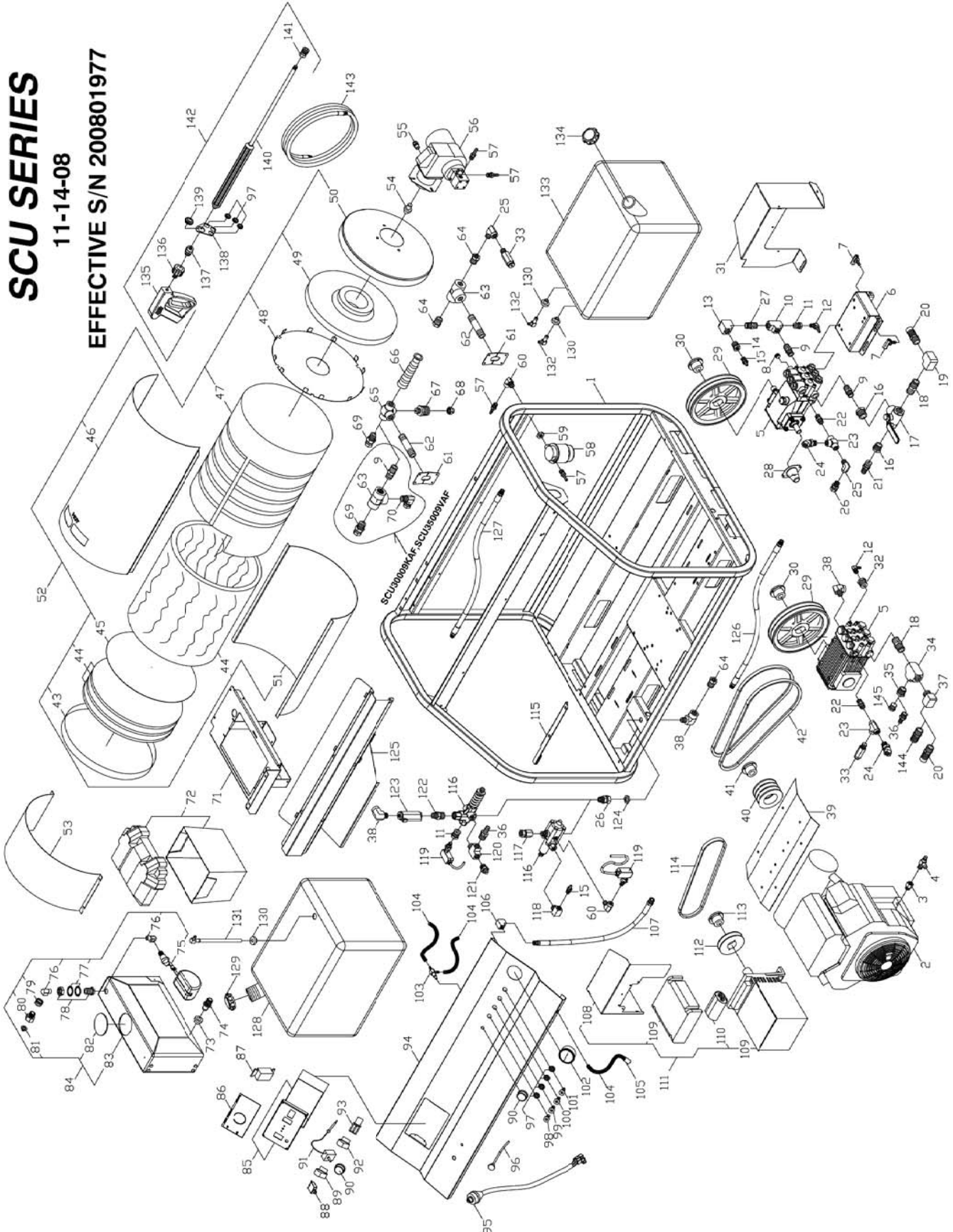
# AUSSIE SPARES DIAGRAM & PARTS LIST

## AUSSIE HYDROTEK SCU SERIES

### SCU SERIES

11-14-08

EFFECTIVE S/N 200801977



Summary of pumps used by Australian Pump:

Model	Pump manufacturer	Pump model
HSCU51006V	General pump	TSP1821





# AUSSIE SPARES DIAGRAM & PARTS LIST

## AUSSIE HYDROTEK SCU SERIES

### SCU SERIES PARTS LIST

1	HSC14	SCU FRAME 14 STAINLESS (2008)	ALL
2	MS150	ENGINE GAS 16HP VANGAURD E/S W/MUFFLER	SCU33005V
	MK200	ENGINE 20HP KOHLER CS W/MUFFLER	SCU35005KQ
	MH240	ENGINE 24HP HONDA E/S W/MUFFLER	SCU35006HQ
	MS210	ENGINE GAS 21HP VANGAURD E/S W/MUFFLER	SCU35006VQ
	MK250	ENGINE 25HP KOHLER W/MUFFLER	SCU30009KAF
	MS290	ENGINE GAS 29HP VANGAURD E/S W/MUFFLER	SCU35009VAF
3	D4060	MALE ADAPTER 3/8 BRASS	SCU35005KQ,SCU30009KAF
4	MS006	OIL DRAIN VALVE 3/8	SCU33005V,SCU35005KQ,SCU35006VQ,SCU30009KAF
	MS007	OIL DRAIN VALVE 14mm	SCU35006HQ,SCU35009VAF
5	P4535	PUMP 5CP3120 4.5 @ 3500 20mm	SCU33005V,SCU35005KQ
	PG563	PUMP 5.6/3500 NICKEL PLATED MA	SCU35006VQ,SCU35006HQ
	PG585	PUMP TSF2021 23600 @ 8.5 GPM	SCU30009KAF,SCU35009VAF
6	HSC40	PUMP RAIL ASSEM. SCU-2008 MODELS	ALL
7	HPR60	PUMP RAIL BOLT	ALL
8	D1061	PLUG 3/8 FLUSH HEAD HEX STEEL	SCU33005V,SCU35005KQ
9	D2088	NIPPLE 1/2" BRASS	SCU33005V,SCU35005KQ,SCU35006VQ,SCU35006HQ
10	D6088	TEE 1/2" BRASS	SCU33005V,SCU35005KQ,SCU35006VQ,SCU35006HQ
11	D1084	BUSHING 1/2 x 1/4 BRASS	SCU33005V,SCU35005KQ,SCU35006VQ,SCU35006HQ
12	D8040	HOSE BARB 1/4 90 ELBOW*	ALL
13	D5088	ELL 1/2 BRASS	SCU33005V,SCU35005KQ
	D5588	STREET ELL 1/2 BRASS*	SCU35006VQ,SCU35006HQ
14	D1086	BUSHING 1/2 x 3/8 BRASS	SCU33005V,SCU35005KQ,SCU35006VQ,SCU35006HQ
15	D6062	HOSE BARB , PUSH LOCK 3/8H x 3/8	SCU33005V,SCU35005KQ,SCU35006VQ,SCU35006HQ
16	D1128	BUSHING 3/4 x 1/2 BRASS	ALL
17	VVB38	BALL VALVE 3/4" 3 WAY	SCU33005V,SCU35005KQ,SCU35006VQ,SCU35006HQ
18	D2089	NIPPLE 3/4" BRASS	ALL
19	D7512	ELL 3/4" BRASS	SCU33005V,SCU35005KQ,SCU35006VQ,SCU35006HQ
20	DJ033	ORIFICED BARB .339 3/4NPT x 1"H BARB W/NYLON ORIFICE	SCU33005V
	DJ037	ORIFICED BARB .375 3/4NPT x 1"H BARB W/NYLON ORIFICE	SCU35005KQ
	DJ035	ORIFICED BARB .359 3/4NPT x 1"H BARB W/NYLON ORIFICE	SCU35006VQ
	DJ040	ORIFICED BARB .406 3/4NPT x 1"H BARB W/NYLON ORIFICE	SCU35006HQ
	DJ045	ORIFICED BARB .453 3/4NPT x 1"H BARB W/NYLON ORIFICE	SCU30009KAF,SCU35009VAF FOR INLET SOAP FUNCTION
21	D8076	HOSE BARB 5/8H x 1/2M .339id PNK	SCU33005V
	D8077	HOSE BARB 5/8H x 1/2M .406id RED	SCU35005KQ,SCU35006VQ,SCU35006HQ
22	DB506	NIPPLE 3/8 STEEL	ALL
23	DE066	TEE 3/8 STEEL	ALL
24	DE606	SWIVEL 45 3/8M x 3/8F STEEL	ALL
25	DC568	STREET ELL 3/8 STEEL	SCU35006VQ,SCU35006HQ
	DE866	SWIVEL 3/8F x 3/8M 90 BRAZED	SCU33005V,SCU35005KQ
26	DE566	SWIVEL 3/8 STEEL	SCU35006VQ,SCU35006HQ
27	D2088	NIPPLE 1/2" BRASS	SCU33005V,SCU35005KQ
28	PP692	SHAFT PROTECTOR 5 FRAME BD PMP	SCU33005V,SCU35005KQ
29	KU080	SHEAVE 2BK80H	SCU33005V
	KU090	SHEAVE 2BK90H	SCU35005KQ,SCU35006VQ,SCU35006HQ
	KV090	SHEAVE 3BK90H	SCU30009KAF,SCU35009VAF
30	KSH17	BUSHING H20mm	SCU33005V,SCU35005KQ
	KSH19	BUSHING H24mm	SCU35006VQ,SCU35006HQ,SC30009KAF,SCU35009VAF
31	HSC46	PUMP BELT GUARD SCU-WITH 5CP PUMPS	SCU33005V,SCU35005KQ
	HSC42	PUMP BELT GUARD SCU HIGH FLOW UNITS	SCU35006VQ,SCU35006HQ,SC30009KAF,SCU35009VAF
32	D1127	BUSHING 3/4M x 1/4F BRASS	SCU30009KAF,SCU35009VAF
33	UP137	PRESSURE RELIEF 3700psi BLACK	SCU33005V,SCU30009KAF
	UP045	PRESSURE RELIEF 4500+15% 500q	SCU35005KQ,SCU35006VQ,SCU35006HQ,SCU35009VAF
34	D6120	TEE 3/4" BRASS (NOT POTTED)	SCU30009KAF,SCU35009VAF
35	D1128	BUSHING 3/4 x 1/2 BRASS	SCU30009KAF,SCU35009VAF
36	D8088	HOSE BARB 1/2" BRASS*	SCU30009KAF,SCU35009VAF FOR INLET SOAP FUNCTION
37	D5512	STREET ELBOW 3/4" BRASS	SCU30009KAF,SCU35009VAF
38	DE586	STREET ELL 1/2F X 3/8m steel	SCU30009KAF,SCU35009VAF
39	HSC47	MUFFLER HEAT SHEILD SCU	SCU33005V,SCU35005KQ,SCU35006VQ,SCU30009KAF
	HS039	MUFFLER HEAT SHEILD , 20 HONDA 8/98JR	SCU35009VAF
40	KV036	SHEAVE 3BK36 x 1"	SCU35006HQ
	KV038	SHEAVE 3TB38	SCU33005V
	KV046	SHEAVE 3TB46	SCU35005KQ,SCU35006HQ
	KV054	SHEAVE 4TB42	SCU30009KAF,SCU35009VAF
41	KSP16	BUSHING P1 x 1	SCU33005V,SCU35005KQ,SCU35006VQ,
	KSP18	BUSHING P1 x 1 1/8	SCU35006HQ,SCU35009VAF
	KSP23	BUSHING P1 x 1 7/16	SCU30009KAF
42	KSB42	BELT BX42	SCU33005V,
	KSB44	BELT BX44	SCU35005KQ
	KSB45	BELT BX45	SCU35006VQ,SCU35005HQ,SCU30009KAF,SCU35009VAF
43	B0028	COIL CAP FLAT SC 18" NO HOLE	ALL
44	BN053	INSUL BLKT 50SQ' 1/2 x 24 8#25'	ALL
45	BN112	INSUL DISC RETAINER 18" SC FLAT END CAP	ALL
46	B2315	COIL WRAP TOP W/RG 36in ASM 8/98JR	ALL
47	BC480	COIL; 4PK SCH 80 18"	ALL
48	BN111	INSULATION DISC RETAINER 4in HOLE	ALL
49	BN054	INSULATION HEAD 18" (TOP HAT)	ALL
50	B0013	COIL CAP ASM 18in 4.5id GRAINE 8/98JR	ALL
51	B2323	COIL WRAP BOTTOM ASM 12/98BL	ALL
52	BC491	COIL ASM 4PK SCH80 SCU (2008)	ALL
53	HSC19	BATTERY RAIN GUARD-SCU (2008)	ALL
54	BZ300	FUEL NOZZLE 3.0 90B	SCU33005V,SCU35005KQ,
	BZ350	FUEL NOZZLE 3.5 90B	SCU35006VQ,SCU35006HQ,
	BZ400	FUEL NOZZLE 4.0 90B	SCU30009KAF,SCU35009VAF
55	EW008	STRAIN RELIEF 1/2 HEYCO (3/8)	ALL
56	BU007	BURNER; WAYNE 110v CAP 2-4	ALL
57	D8044	BARB; HOSE; 1/4; BRASS* .312 t	ALL
58	BF020	FUEL FILTER; RACOR HYDRO TEK	ALL
59	D7064	HEX NUT 1/4 BRASS	ALL
60	DC043	STREET ELL 1/4 STEEL	ALL
61	B2324	COIL NIPPLE RETAINER 1/2in 12/98BL	ALL
62	BC855	BURNER NIPPLE; 1/2 x 5.5 SCH80*	ALL
63	DE088	TEE 1/2 STEEL A105 FORGED	ALL
64	DA086	BUSHING 1/2 x 3/8 STEEL	ALL
65	DE08S	TEE 1/2in-SPECIAL 3/8 TAP	ALL
66	ECH75	HEAVY DUTY BEND RESTICTOR-B	ALL
67	UPB05	ADAPTER FITTING-BURST DISC***	ALL
68	UPB80	BURST DISC 8000psi TORQUE 32-4	ALL



# AUSSIE SPARES DIAGRAM & PARTS LIST

## AUSSIE HYDROTEK SCU SERIES

### 11-14-08 EFFECTIVE S/N 200801977

69	DE568	SWIVEL 3/8F x 1/2M STEEL	ALL
70	DE869	SWIVEL 3/8FS x 1/2M 90 STEEL	SCU30009KAF, SCU35009VAF
71	HB024	BATTERY BOX TRAY SCU (2008)	ALL
72	HB100	BATTERY BOX ATWOOD G24 (LARGE)	ALL
73	DFF10	WATER TANK BUSHING 5/8	ALL
74	DOF10	DISCONNECT BARB/TANK FITTING	SCU33005V, SCU35005KQ, SCU35006VQ, SCU35006HQ
75	VVF08	FLOAT VALVE 3/8 BRASS	SCU33005V, SCU35005KQ, SCU35006VQ, SCU35006HQ
76	D5566	STREET ELL 3/8 BRASS	SCU33005V, SCU35005KQ, SCU35006VQ, SCU35006HQ
77	FW700	WASHER LOCK 1 in GALV***	SCU33005V, SCU35005KQ, SCU35006VQ, SCU35006HQ
78	D7520	PANEL FITTING 3/4 BRASS	SCU33005V, SCU35005KQ, SCU35006VQ, SCU35006HQ
79	D0010	SPRING GARDEN H A	SCU33005V, SCU35005KQ, SCU35006VQ, SCU35006HQ
80	D006M	GARDEN H A 3/8 NPT MALE	SCU33005V, SCU35005KQ, SCU35006VQ, SCU35006HQ
81	D0021	SCREEN WASHER GARDEN H A	SCU33005V, SCU35005KQ, SCU35006VQ, SCU35006HQ
82	HL017	TANK CAP 4in W/HOLE	SCU33005V, SCU35005KQ, SCU35006VQ, SCU35006HQ
83	WT040	TANK ; FLOAT 4 GAL HD LINEAR	SCU33005V, SCU35005KQ, SCU35006VQ, SCU35006HQ
84	WT046	FLOAT TANK ASM W/VALVE/FILTER	SCU33005V, SCU35005KQ, SCU35006VQ, SCU35006HQ
	WT0SC	OPTIONAL SC ANTIFREEZE TANK	SCU30009KAF, SCU35009VAF
85	HSC51	LASER CUT SC BOX ASM/TOP AND BOTTOM	ALL
86	GLL57	LABEL; SC/SS PANEL CONTROL BOX***	ALL
87	EP154	GFCI DUPLEX RECEPTACLE 20 AMP	ALL
88	ECF10	CIRCUIT BREAKER 15 AMP*	ALL
89	EC410	ROCKER SWITCH 110V RED SPST	ALL
90	ECH70	KNOB; BLUE .25id x 1.5od	ALL
91	ECH50	THERMOSTAT; 60-250 1 GP PART=25	SCU33005V, SCU35005KQ, SCU35006VQ, SCU35006HQ
	ECH55	THERMOSTAT; 60-190F***	SCU30009KAF, SCU35009VAF
92	EC411	ROCKER SWITCH 110V CLEAR SPST	ALL
93	EM601	HOUR METER 110V	ALL
94	HSC38	SCU CONTROL PANEL, EZ ACCESS (2008)	ALL
95	ESS08	WIRE HARNESS 25HP KOHLER SC	SCU35005KQ, SCU30009KAF
96	HL216	CHOKE CABLE 6'	SCU35005KQ, SCU30009KAF
97	HLB09	GROMET NOZZLE HOLDER***	ALL
98	NQ500	NOZZLE/QDC 05 x 0"	SCU33005V, SCU35005KQ, SCU30009KAF
	NQ550	NOZZLE/QDC 055 x 0"	SCU35006VQ
	NQ600	NOZZLE/QDC 06 x 0	SCU35006HQ
	NQ450	NOZZLE/QDC 045 x 0	SCU35006VAF
99	NQ502	NOZZLE/QDC 05 x 15	SCU33005V, SCU35005KQ, SCU30009KAF
	NQ552	NOZZLE/QDC 055 x 15	SCU35006VQ
	NQ602	NOZZLE/QDC 06 x 15	SCU35006HQ
	NQ452	NOZZLE/QDC 045 x 15	SCU35009VAF
100	NQ504	NOZZLE/QDC 05 x 40	SCU33005V, SCU35005KQ, SCU30009KAF
	NQ554	NOZZLE/QDC 055 x 40	SCU35006VQ
	NQ604	NOZZLE/QDC 06 x 40	SCU35006HQ
	NQ454	NOZZLE/QDC 045 x 40	SCU35009VAF
101	NQ453	NOZZLE/QDC 045 x 25	SCU33005V, SCU35005KQ, SCU35006VQ
	NQ553	NOZZLE/QDC 05 x 25	SCU35006HQ
102	UG055	GAUGE; 5000psi DUAL SCALE; PN	ALL
103	VVC10	CHEMICAL MET VALVE MV-100 MOD	ALL
104	DHB04	TUBING; CLEAR BRAIDED; 1/4	ALL
105	VF045	STRAINER CHEMICAL W/CHECK	ALL
106	D5044	ELL 1/4 BRASS*	ALL
107	DH128	HOSE 1/4 x 26" 5000psi HN GAUGE HN MODULE GAUGE HOSE	ALL
108	HSC20	GENERATOR BELT GUARD SCU	ALL
109	MB020	GENERATOR 2500w LSA321L10	ALL
110	MB025	CAPACITOR, GENERATOR 15MFD	ALL
111	MB052	SCU GENERATOR ASSEMBLY (2008)	ALL
112	KT045	SHEAVE BK45H	SCU35005KQ, SCU30009KAF, SCU35009VAF
	KT034	SHEAVE BK34H	SCU33005V, SCU35006VQ
	KT040	SHEAVE BK40H	SCU35006HQ
113	KSH19	BUSHING H24mm	ALL
114	KSB34	BELT BX34	SCU33005V
	KSB36	BELT BX36	SCU35006VQ
	KSB38	BELT BX38	SCU35006HQ, SCU30008KAF, SCU35009VAF
	KSB4X	BELT BX40	SCU35005KQ
115	HPR57	ADJUSTER BRKT ASM-GENERATOR SCU	ALL
116	UU371	UNLOADER 3-5 @ 3500 K7-1	SCU33005V, SCU35005KQ,
	UU375	UNLOADER K7-2 W/ BYPAS #1	SCU35006VQ, SCU35006HQ
	UU320	UNLOADER/REGULAR 4000 @ 21 GREEN SPRING	SCU30009KAF, SCU35009VAF
117	DE867	SWIVEL 3/8FP x 3/8FPS	SCU33005V, SCU35005KQ, SCU35006VQ, SCU35006HQ
118	D5566	STREET ELL 3/8 BRASS	SCU33005V, SCU35005KQ, SCU35006VQ, SCU35006HQ
119	V5030	PRESSURE SWITCH 4000 1/4" PR16	ALL
120	D6588	STREET TEE 1/2" BRASS*	SCU30009KAF, SCU35009VAF
121	UPT46	THERM DUMP VALVE 145F 1/2MPT	SCU30009KAF, SCU35009VAF
122	DB507	NIPPLE 3/8 x 1/2 STEEL	SCU30009KAF, SCU35009VAF
123	V5005	FLOW SWITCH 8 @ 4200 ST5	SCU30009KAF, SCU35009VAF
124	D7061	HEX NUT 3/8 BRASS-REMOTE UNLOADER	ALL
125	HSC21	FUEL TANK HEAT SHIELD-SCU	ALL
126	DH034	HOSE 3/8 x 34in 5000psi NO WIP	SCU33005V, SCU35005KQ, SCU35006VQ, SCU35006HQ
	DH049	HOSE 1/2 x 50in 3500psi NO WIP	SCU30009KAF, SCU35009VAF
127	DH007	HOSE 3/8 x 48in 5000psi	SCU33005V, SCU35005KQ, SCU35006VQ, SCU35006HQ
	DH046	HOSE 1/2 x 46IN 3500psi NO WIP	SCU30009KAF, SCU35009VAF
128	WT08R	FUEL TANK 18 GAL GAS RED	ALL
129	WT081	FUEL CAP; GASOLINE	ALL
130	DFF04	FUEL TANK BUSHING 1/4	ALL
131	DF599	FUEL TANK ADAPTER W/PLASTIC TUBE	ALL
132	DFF04	FUEL TANK ELL 1/4	ALL
133	WT078	FUEL TANK 18 GAL DIESEL CLEAR*	ALL
134	WT080	FUEL CAP; DIESEL	ALL
135	VG200	TRIGGER GUN, INSULATED 4000psi	ALL
136	DO74T	M22 TWIST COUPLER 1/4" MALE	ALL
137	DO74F	TWIST COUPLER 1/4 PLUG FEM-sut	ALL
138	HNZ05	NOZZLE HOLDER (FOR WAND)	ALL
139	HLB30	GROMET ; NOZZLE HOLDER***	ALL
140	VW045	WAND 1/4 x 48in MOLDED GRIP	ALL
141	DQ04S	COUPLER 1/4 SOCK FEM	ALL
142	AVGH3	WAND 48" MOLDED NOZZLE HOLDER 3)NOZZLE HOLDER W/GROMETS	ALL
143	DH060	HOSE 3/8 x 50' 5000psi BLU/GRY 25	ALL
144	D8169	HOSE BARB 1 IN H X 3/4 P BRASS	SCU30009KAF, SCU35009VAF
145	D1080	PLUG 1/2" BRASS	SCU30009KAF, SCU35009VAF