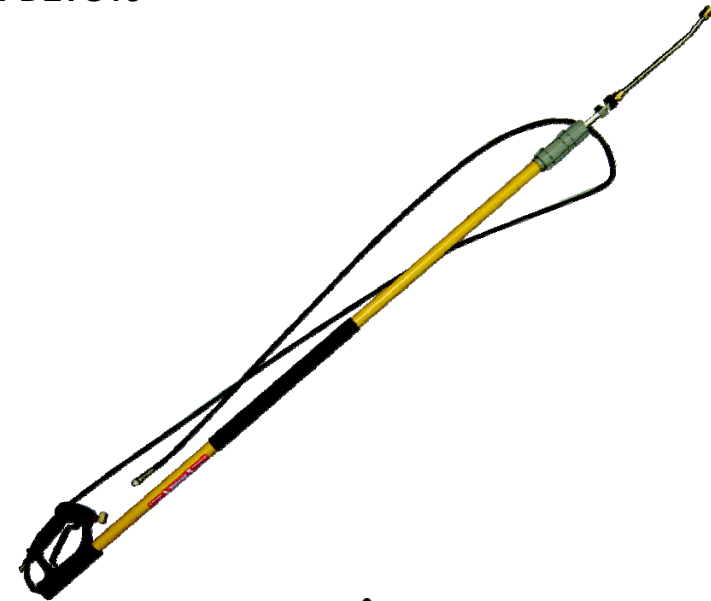


*Reliable Products ...
Reliable People*

Aussie Tele-Wand

High Pressure Extendable Wands

AGPDLTG18



AUSTRALIAN PUMP

Australian Pump Industries Pty Ltd
7 Gladstone Road, Castle Hill NSW 2154
Ph: (02) 9894 4144 Fax: (02) 9894 4240
www.aussiepumps.com.au info@aussiepumps.com.au



IMPORTANT:

TO REDUCE RISK OF INJURY, READ
OPERATING INSTRUCTIONS CAREFULLY
BEFORE USING EQUIPMENT



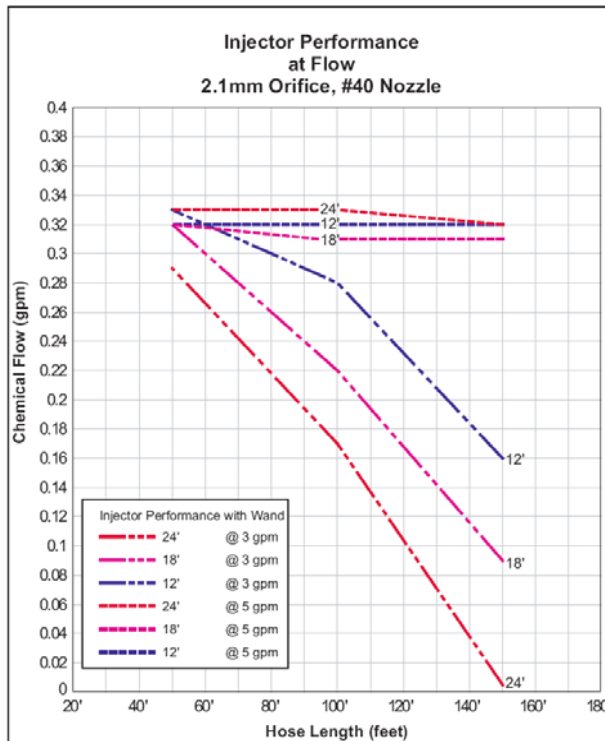
AUSTRALIAN PUMP

CONGRATULATIONS ON THE PURCHASE OF YOUR AUSSIE HIGH PRESSURE TELE-WAND

Specifications: subject to change without notice

Model	Max flow	Max pressure	Max liquid temperature	Shipping weight	Dimensions - retracted
AGPDLTG18	40 lpm	3500 psi	90 °C	5.2 kg	2200mm x 150mm

Performance**:



The Aussie Tele-wand operates with minimal pressure loss. This means that it may be used with downstream chemical injectors.

The chart depicts the effects of discharge hose length on a fixed chemical injector in 11 lpm and 19 lpm systems. Tests were conducted using water. These test results are representative of performance and are not accurate for all applications. Outside factors such as discharge hose length, water temperature, viscosity of the chemical, and discharge flow effect how well any injector can draw chemical.

** Values are representative of performance. Actual performance will vary depending on components and conditions.

Other Accessories:



AGPDFSC20

Aussie Spinner flat surface cleaner ... work faster, with less water & less machine wear.



JP19-1RLA60P

Aussie cartridge filter to protect pump from grit in the water supply.



MPA25184215

Spray detergents, degreasers, disinfectants without them going through the pump.

CTN350-nozzle size

Aussie Turbo Master turbo lance...

Increase the effective working pressure of your machine without making it work any harder.



Aussie Quik Tip "Q" series nozzles 5 packs

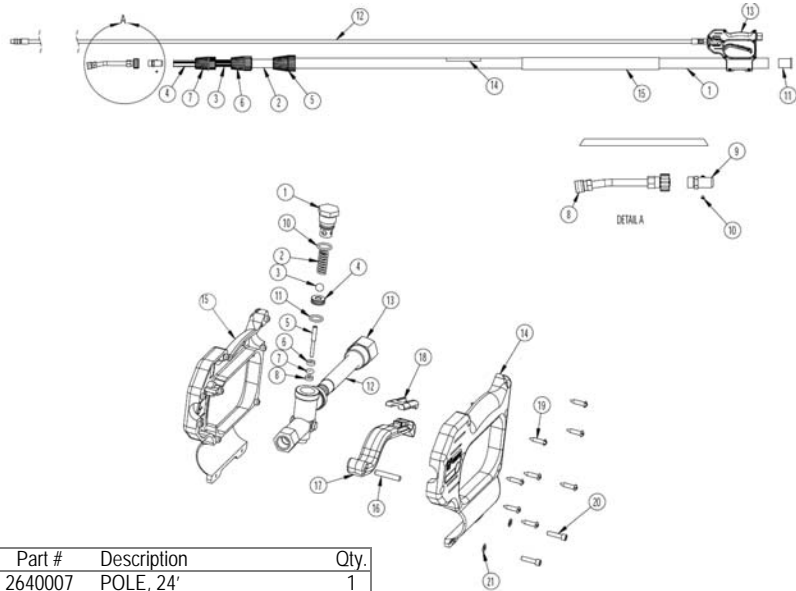
For convenience and savings.



Aussie Reel Mate Hose Reel Kits

Extend the life of your hose and prevent trip hazards with these great value hose reel kits.

Parts List & Exploded View:



Item	Part #	Description	Qty.
1	2640007	POLE, 24'	1
	2640002	POLE, 18'	1
	2640001	POLE, 12'	1
2	2103036	ASSY., POLE, 24'	1
3	2103037	ASSY., POLE, 24'	1
	2103034	ASSY., POLE, 18'	1
4	2103038	ASSY., POLE, 24'	1
	2103035	ASSY., POLE, 18'	1
	2103033	ASSY., POLE, 12'	1
5	2660017	ASSY., COLLET, 24'	1
	2660016	ASSY., COLLET, 18'AND 24'	1
	2660009	ASSY., COLLET, 12'	1
6	2660016	ASSY., COLLET, 18'AND 24'	1
7	2660086	ASSY., COLLET, 24'AND 18'	1
8	2100205	ASSY., LANCE	1
9	2510116	ADAPTER, M22	1
10	2200004	SCREW, M4	2
11	2660018	GROMMET, 24'	1
	2660015	GROMMET, 18'	1
	2660008	GROMMET, 12'	1
12	680131	ASSY., HOSE, 24'	1
	680129	ASSY., HOSE, 18'	1
	680130	ASSY., HOSE, 12'	1
13	DG3500TS24	ASSY., GUN, 24'	1
	DG3500TS18	ASSY., GUN, 18'	1
	DG3500TS12	ASSY., GUN, 12'	1
14	GPC0058	LABEL, WARNING	1
15	2702015	GUARD, FOAM, 24'	1
	2702014	GUARD, FOAM, 18'	1
	2702013	GUARD, FOAM, 12'	1

REPLACEMENT KITS INCLUDE ITEM #s
1, 2, 3, 4, 5, 6, 7, 11, 14, 15
2100243 COMPLETE POLE REPLACEMENT KIT, 12'
2100244 COMPLETE POLE REPLACEMENT KIT, 18'
2100245 COMPLETE POLE REPLACEMENT KIT, 24'



THE USER OF THIS ACCESSORY IS RESPONSIBLE FOR READING, UNDERSTANDING, & FOLLOWING ALL WARNINGS AND PRECAUTIONS PRIOR TO OPERATION.

FAILURE TO FOLLOW ALL WARNINGS & PRECAUTIONS MAY RESULT IN PROPERTY DAMAGE, SERIOUS PERSONAL INJURY, OR DEATH.

STOP

- . NEVER use near power lines.
- . NEVER extend or retract wand while spraying or while under pressure. Stop the equipment and relieve pressure before making any adjustments to the wand.
- . NEVER change nozzles or accessories while under pressure. Stop the equipment and relieve pressure before making any changes.
- . NEVER use while on ladders or scaffolding.
- . NEVER use with unapproved accessories.
- . NEVER exceed rated pressure or volume.
- . NEVER use high-pressure to clean persons or animals.
- . NEVER remove or alter warning labels or identification tags.
- . NEVER use wand if damaged.
- . ALWAYS read, understand, and follow operation instructions.
- . ALWAYS make certain area is clear of obstructions or hazards.
- . ALWAYS maintain proper balance and control of extension wand.



This label appears on the extension wand. Do not remove or deface.

If the label becomes damaged or unreadable please call for a no charge replacement.

DANGER

ELECTRIC SHOCK HAZARD

Do not use on or near electrical wiring of any kind.
 Keep at least 10 feet (3 meters) away from power lines.
 Do not touch or aim spray at electrical wiring of any kind.
 Do not operate from ladders or elevating devices of any kind.
 Operator must maintain both feet on solid ground.

Assembly

To protect the coupler and lance during shipping these parts are shipped strapped to the extension pole.

The Aussie Tele-wand requires some final assembly. To complete the assembly, simply attach the M22 fitting as illustrated.

The extension wand is now ready for use.



Operating Instructions

Read, understand, and follow ALL safety guidelines and operation instructions prior to use.

To use your Aussie extension wand:

Connect the outlet of your pressure washer to the inlet port of the trigger gun of the Aussie Tele-wand using appropriate quick couplers or fittings rated to handle high pressure.

Do **NOT** bypass, disable, or remove the trigger gun.

DO NOT use pliers, pipe wrenches, etc. to tighten as it will cause the collet to seize to the threaded plastic housing. **HAND TIGHTEN ONLY!**

The Aussie Tele-wand may be used fully retracted or fully extended or any point in between. Caution must be used when the wand is extended as the reaction force of the nozzle spraying will cause the wand to flex. Make absolutely certain that there are no power lines or sources of electrical power within 10 feet of the lance at any time.

Contact with power transmission lines can cause fatal electrocution!

Caution: Do not extend or retract your Aussie Tele-wand while spraying or while under pressure. Stop the equipment and relieve any pressure before making adjustments to the extension wand or changing nozzles.

To extend the wand:

Loosen the brown lock rings and pull the wand out to the desired length. Re-tighten the lock rings to hold the wand at the desired length.

To retract the wand:

Loosen the brown lock rings and slide the extension segment into the wand until the desired length is reached and re-tighten the lock rings to hold the extension segments in place.

To begin spraying:

Start the pressure washer. Raise the wand and keep the nozzle at least ten feet away from the surface to be cleaned. **Keep the extension wand clear of power lines.**

Squeeze the trigger to begin spraying, maintain stable footing, and move the wand in to the surface to be cleaned.

Caution: Except in cases of emergency, do not release the trigger near any surfaces.

To stop spraying:

Before releasing the trigger gun move the nozzle at least ten feet away from the surface being cleaned and make sure you have solid footing. **The wand will rebound when the trigger is released or if pressure is lost. USE EXTREME CAUTION** when working on or near fragile surfaces as there may be enough force to damage surfaces or break windows. **Keep clear of power lines.** When you are clear of the work surface and in a safe area - release the trigger.

BELT ASSEMBLY/DIRECTIONS (replacement p/n: DGPD20015)

Reduce the risk of back injuries by using the belt harness supplied.

The belt is like any normal belt - it fits around a person's waist with (if you are right handed) the aluminium pole clamp to your right hip side. There is a nylon strap attached to the belt that you can adjust, so the belt is clipped snugly into place around your waist.

There are two plastic openings on the one end of the belt with the smaller opening used to insert the clip on the nylon belt strap, which is wrapped in place around your waist. The larger second opening is for the adjustable shoulder harness which you cross over your opposite shoulder (left shoulder) from back to front so the clip is inserted at the same location that you just secured the nylon strap onto the belt.

To attach the belt to the telescoping wand, first unclip the nylon strap holding the aluminium clamp from the belt. Securely fasten the aluminium clamp to the telescoping pole in a position that the operator chooses. Tighten with a screwdriver so that the clip is positioned so it can be fastened back into the belt. Clip the nylon strap, which is now clamped onto the telescoping wand, back into the belt and you are ready to operate the telescoping wand with the belt securely assembled.

