

Aussie Pumps

AB Mk 2 High Pressure Blaster

OPERATION & MAINTENANCE MANUAL

Covers:

AB22CA

AB32G

AB42G



Oct 2011



IMPORTANT:

TO REDUCE RISK OF INJURY, READ
OPERATING INSTRUCTIONS CAREFULLY
BEFORE USING EQUIPMENT



 AUSSIE PUMPS AB SERIES OPERATING AND MAINTENANCE INSTRUCTIONS

*** * WARNING * ***
 AUSSIE AB SERIES HIGH PRESSURE WATER BLASTERS ARE DESIGNED
 FOR PROFESSIONAL OPERATORS ONLY

 INTRODUCTION

Thank you for purchasing this Aussie Pumps Eco-clean pressure washers. For over 10 years cleaning professionals have relied on the superior quality of Australian Pump products for their pressure washing needs.

Before attempting to operate your machine please read this instruction manual and the engine manual thoroughly following all directions carefully. By doing so you will ensure safe operation of the unit and will enjoy long and trouble free service from your high pressure water blaster.

This Aussie Eco Clean product is guaranteed against faults in manufacture for one year from purchase. This guarantee is invalid if the product is found to have been abused in any way, or not used for the purpose for which it was intended.

Routine maintenance is the owner's responsibility. Failure to maintain the machine in line with the services outlined on the back page will invalidate warranty. High pressure accessories carry a 3 month warranty.

Aussie use only genuine Honda engines. Universal 3 year warranty on all Honda GX series engines supported by Honda MPE in Australia



N.B. Warranty is not transferrable to third parties in the event of sale of the machine within the warranty period. Please note that any parts used in warranty repairs are guaranteed for a period limited by the original warranty of the parent product.

Our goods come with guarantees that cannot be excluded under the Australian Consumer Law. You are entitled to a replacement or refund for a major failure and for compensation for any other reasonably foreseeable loss or damage. You are also entitled to have the goods repaired or replaced if the goods fail to be of acceptable quality and the failure does not amount to a major failure.

The benefits under the Aussie Pump warranty are in addition to other rights under Australian Consumer Law.



 SAFETY PRECAUTIONS - IMPORTANT

1. **NEVER** direct the spray jet at any person or animal. Keep hands and feet clear of the cleaning nozzle at all times.
2. **NEVER** direct spray jet at any surface that may contain asbestos material.
3. **NEVER** hold a finger over the high pressure nozzle.
4. **NEVER** direct the spray jet at the machine itself or any electrical equipment.
5. After use release the pressure in the high pressure hose by operating the gun trigger.
6. **DO NOT** attempt any mechanical repair. If you have a problem with your machine contact your local Aussie Eco Clean Service Division, phone (02) 8865 3500.
7. **NEVER** supply any liquid other than water to the pump inlet.
8. **DO NOT** run dry; cold water re-entering the hot dry pump will cause the pistons to crack.
9. **NEVER** pull the high pressure hose if it has formed kinks or nooses.
10. **NEVER** pull the hose over sharp objects.
11. **DO NOT** attempt to disconnect any hose or coupling with pressure still in the hose.
12. **DO NOT** operate the machine whilst standing on ladders, use a platform tower or scaffolding.
13. Operate in well ventilated areas only.
14. **DO NOT** fill the fuel tank while engine is running
15. **DO NOT** try to repair a leak in the hose or connection while the system is under pressure.
16. **DO NOT** substitute any component part on this machine. Use of incorrect parts could cause serious personal injury.
17. Children should **NOT** be allowed to use the machine.
18. We recommend the use of safety goggles and steel cap boots when using the machine, particularly with the sand blasting attachment (optional accessory) or any application where loose particles of stone or grit, etc. may be blown around by the pressure spray.



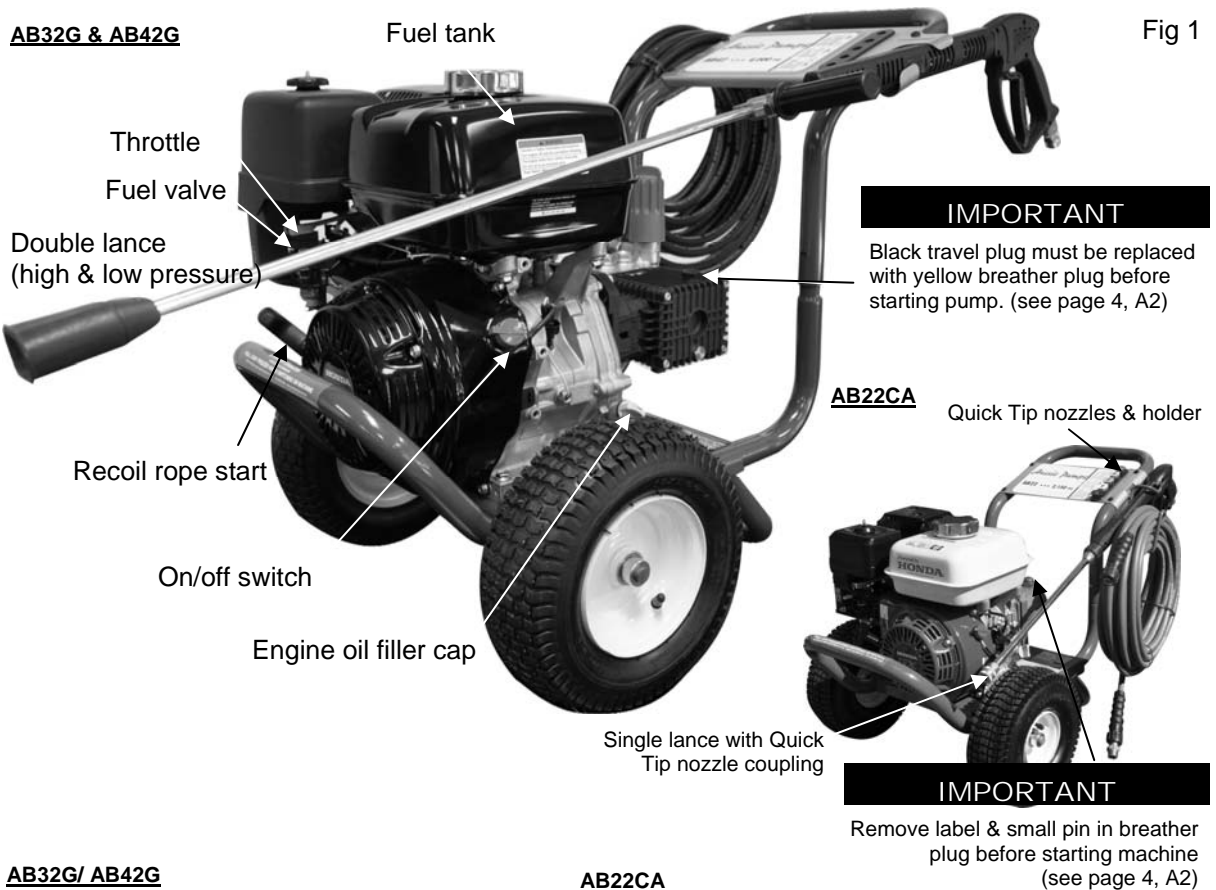
SPECIFICATIONS:

<i>Model</i>	<i>Pump Pressure (psi)</i>	<i>Pump Model</i>	<i>Flow rate (lpm)</i>	<i>Engine</i>	<i>Pump rpm</i>
AB22CA	2150	CAT 3DNX	12.5	Honda GX200 6.5HP	3200
AB32G	3000	INTERPUMP TX1508G8UIA	13	Honda GX270 9HP	3200
AB42G	4000	INTERPUMP TX1510G8UIAF	13	Honda GX390 13HP	3200

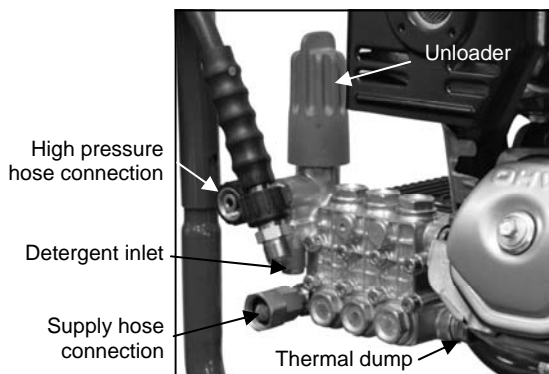
ASSEMBLY AND PREPARATION FOR USE

Before proceeding with assembly of your new Aussie Eco-clean AB high pressure blaster, check that all parts listed below are included.

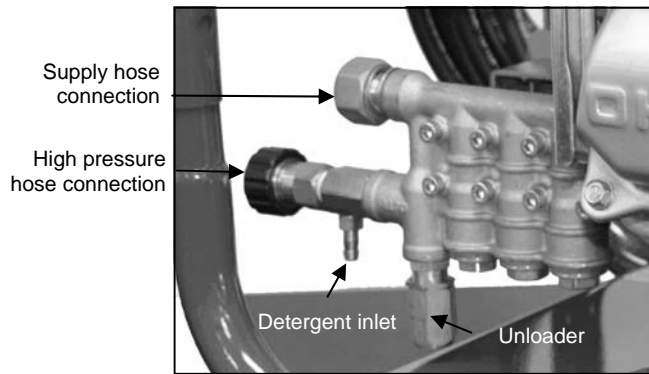
- 1 Gun handle assembly and high pressure hose
- 1 Lance and nozzle assembly
- 1 Inlet hose connector assembly



AB32G/ AB42G



AB22CA



A. Machine Preparation (initial start-up)

1. Check oil level in the pump and fill with 30 weight non detergent oil if required. (SAE 75W-90)
2. On AB22CA remove rubber pin from pump breather plug, on AB32G & AB42G replace black travel plug on pump with yellow breather plug (see fig 1, page 3).
3. Check oil level in engine and fill with proper grade oil if necessary. (SAE 10W-30)
4. Check fuel level and fill if necessary. (unleaded petrol)
5. Assemble gun/lance assembly.

B. Hose Connections

1. Connect high pressure hose to machine outlet.
2. If optional low pressure downstream, in-line chemical injector is to be used, connect the injector tube to the detergent inlet (see fig. 1) and place the other end of the tube, with the strainer attached, in the chemical container (not supplied).
3. Connect gun/lance assembly to high pressure hose. Quick coupler sleeves must be pushed into locked position to prevent accidental uncoupling.
4. Check inlet water filter is clean then connect water supply hose to machine. Use a 18mm (minimum) hose .



Incoming water supply must deliver double the flow of the machine. If questionable, check supply at machine. If supply is insufficient, do not operate from this outlet. For residential use, the outlet closest to the meter will usually deliver the highest flow rate. Connect only to clean town water supply.

Warning: Do not operate from tank or pond. Doing so will cavitate the pump causing damage. Cavitation or pump starvation is not covered by warranty. Cavitation is a phenomenon causing vacuum pockets to form within the pump that eventually implode under pressure pitting the internal pump surfaces.

C. Before starting the machine

OPERATE IN WELL VENTILATED AREAS **ONLY**.

1. Ensure machine is level
2. Turn on water supply.
3. Pull gun trigger until water starts to flow in a steady stream then release trigger.

D. Starting the engine

1. Ensure fuel valve is open
2. Move the choke on the engine to the closed position (see fig. 1). If engine is warm, move choke half-way.
3. Turn engine ON/OFF switch to ON
4. Hold the gun trigger on.
5. Pull the recoil starter grip lightly until resistance is felt, then pull briskly.
6. After engine starts, release the gun trigger and slowly open the choke.
7. Warm up engine for 3 minutes without load.

E. Pressure washing

WEAR PROPER FACE PROTECTION WHEN OPERATING PRESSURE WASHER!

AB22CA: Single lance with quick fit nozzles

1. Select the cleaning nozzle or accessory best suited for the cleaning job.
NOTE: some accessory nozzles function as both a high pressure cleaning nozzle and low pressure chemical injector nozzle. (see page 6 for further details)
2. LOCK THE GUN VALVE SAFETY TRIGGER (prevents accidental activation)
3. Connect the required nozzle.
4. Push quick coupler sleeve into LOCKED position to prevent accidental loss of nozzle. The unlock gun trigger.

AB32G & AB42G: Double lance with twist grip adjustment

1. For high pressure jetting rotate side grip backwards until it stops. Fine control of pressure/flow can be made with small adjustments to the rotation of the grip.
2. When low pressure and high flow is required, including detergent application, unwind grip two complete turns. Adjust the detergent control on the pump as required.

NOTE: Check the system for water leaks, fuel leaks, oil leaks, hose kinks, etc. Correct any problems before proceeding.

Machine is now ready for operation.



**HIGH PRESSURE SPRAY CAN PENETRATE THE SKIN AND CAUSE SERIOUS INJURY!
NEVER POINT THE SPRAY GUN AT YOURSELF, OTHER PEOPLE OR ANIMALS.
SHOULD SPRAY PENETRATE THE SKIN, SEEK MEDICAL ATTENTION IMMEDIATELY!**

**WARNING DO NOT RUN EXCESSIVE BY-PASS
SWITCH MACHINE OFF WITHIN TWO MINUTES OF CEASING OPERATION AS EXCESSIVE BY-PASS
CAN CAUSE HEAT BUILD UP IN PUMP AND SUBSEQUENT DAMAGE.
EXCESSIVE BY PASS RUNNING VOIDS WARRANTY!!**

IMPORTANT: Use detergents designed specifically for pressure washers. Household detergents could damage pump. **DO NOT use caustic cleaning chemicals as this will void warranty.**

F. Applying detergent

1. Prepare pressure washer detergent solution as required by manufacturer.
2. Place detergent siphon tub/filter into solution.
3. Make sure "DETERGENT" nozzle (Black) is installed (AB22CA) or if using a double lance (AB32G & AB42G) adjust to low pressure setting.
4. Apply cleaning solution to a dry surface, starting at lower portion of areas to be washed and work upward, using long overlapping strokes.
5. Allow time to detergent to activate and then rinse off. DO NOT allow detergent to dry on.

IMPORTANT; You must flush the injection system after each use by placing siphon hose into a bucket of clean water, then run pressure washer in low pressure (black nozzle) for 2 minutes.

G. Stopping the machine

1. If using the detergent injector, flush out the chemical by running clean water through the system.
2. Allow machine to run for 1 minute without load to cool before stopping.
3. Turn engine ON/OFF switch to OFF
4. Pull recoil start until compression resistance is felt. Store the machine in this position to help prevent valve warpage or sticking.
5. Close fuel valve.



FAILURE TO CLOSE THE FUEL VALVE ON THE ENGINE CAN CAUSE FUEL LEAKAGE WHEN THE MACHINE IS BEING TRANSPORTED!

6. Turn off water supply.
7. Remove the cleaning nozzle or accessory from the extension quick coupler (if applicable).
8. Pull gun trigger to release all pressure in the system, then LOCK THE TRIGGER.
9. Hoses may now be disconnected from the machine.

Failure to release pressure before disconnecting the hose quick coupler will result in the quick coupler o-ring seal blowing out. This o-ring must be replaced before operating machine.

Warning: check nozzles and replace of worn

If pressure drops off, check nozzle for wear. Nozzles should be replaced on a regular basis (every month for machines in regular use, every 3 months for machines used intermittently). Using the machine with the incorrect nozzle size or worn nozzle will void warranty and can be dangerous to the operator.

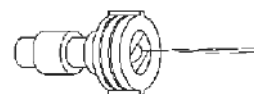
Cleaning nozzles (AB22CA only)

There are up to 5 different quick connect nozzle spray tips, four high pressure and one low pressure “detergent” nozzle. The operator can select a high pressure nozzle spray pattern which best suits the cleaning application.

THE BLASTER (RED) ... DIRECT JET

Provides a concentrated spot of high pressure water allowing you to be further from the surface being cleaned and to blast off stubborn material. **USE CAUTION** with this nozzle as the force available will actually penetrate soft materials or surfaces. Use for

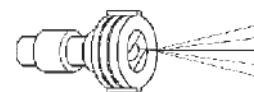
- Reaching high areas such as under eaves.
- Cleaning tar, chewing gum etc. from paths.
- Breaking up large areas of loose paint to allow stripping nozzle to get under surface.
- Removing excess mortar from brick construction.
- Removing rust flakes from steel.



THE STRIPPER (YELLOW) ... 15° ANGLE JET

Provides a narrow fan of concentrated water pressure for removing paint, mildew, rust. By testing several angles between the spray and the surface being worked, the best angle may quickly be identified. Use to

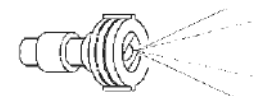
- Remove loose paint from wood, masonry, metal, etc.
- Remove heavy oxidation, mildew, and marine growth from boats etc.
- Clean heavy equipment.



THE CLEANER (GREEN) ... 25° ANGLE JET

Provides a wider fan for pressure cleaning and rinsing. Use for

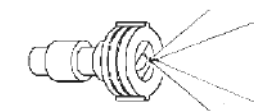
- Removing mildew, light to medium oxidation, and dirt from aluminium siding.
- Rinse stripped areas,
- General light cleaning in preparation for painting.



THE RINSER (WHITE) ... 40° ANGLE JET

Provides a wide fan for cleaning and rinsing. Use for

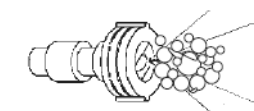
- General wash-down, light cleaning, rinsing off chemicals,
- Used in building restoration
- Sweeping driveways and parking areas.



THE SOAPER (BLACK) ... DETERGENT NOZZLE

A low pressure nozzle used to apply cleaning solutions.

Note: Cleaning solutions cannot be applied with high pressure spray tips (red, yellow, green or white). **DO NOT** use caustic cleaning chemicals as this will void warranty.



UNLOADER SETTING

The high pressure unloader on the machine is factory set to operate the pump at it's rated pressure. DO NOT ADJUST. Tampering with the unloader will void warranty and can be dangerous.

CARE AND MAINTENANCE:**AFTER EACH USE**

If cleaning agents have been mixed with the incoming water, it is essential to flush the machine with clean water after use.

If there is a danger of freezing anti-freeze should be mixed with the flush water or the machine must be completely drained.

After the final flush stop the machine. DO NOT allow the machine to idle for more than 15 seconds. This is particularly important when there is a danger of freezing. Do not run for longer without water supply.

STORAGE

Store the washer in an upright position, preferably drained of water if there is a danger of freezing (or fill with anti-freeze).

PUMP CRANKCASE LUBRICATION

Proper pressure washer pump crankcase lubrication will help extend the working life of the machine. Follow these important guidelines. We recommend keeping a simple service log book.

- Change oil in pump after initial 50 hour run-in period. (SAE 75W-90)
- Change pump oil every 3 months, use high quality oil. (SAE 75W-90)
- Pump oil level can be checked with the dip stick under the breather cap or by viewing the oil sight gauge where fitted. The oil level is correct if level is in the centre of the gauge. If oil level is low, fill to correct level with recommended oil (SAE 75W-90). **DO NOT OVERFILL CRANKCASE!**

PREVENTATIVE MAINTENANCE

- Keep filter in supply hose connection clean, rinse regularly.
- Use correct size nozzles for machine and replace when worn, check serial tag for correct size.
- Drain water from pressure hoses, gun/lance assembly and accessories after use.
- Protect pump from freezing. Failure to remove water from the pump in freezing temperatures will result in damaged pump manifold.
- Use ONLY injector of the size and type designed for this model.
- **DO NOT** tamper with unloader valve adjustment or alter engine speed.
- **DO NOT** siphon chemicals through the pump, it is designed for water only.
- Incoming water supply must not exceed 60°C, otherwise pumps seal damage could result
- Follow engine manufactures guidelines for engine maintenance. (see engine manual)

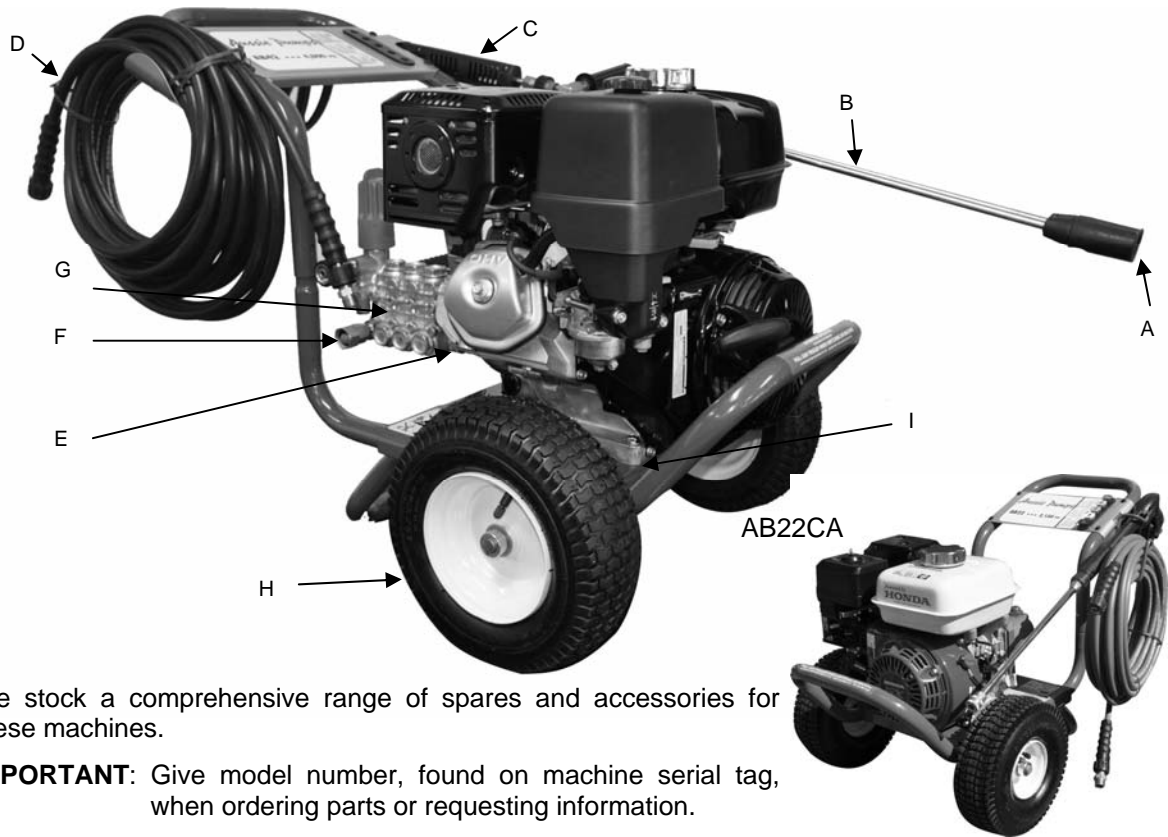
TROUBLE SHOOTING GUIDE

PROBLEM	PROBABLE CAUSE	SOLUTION
No Pressure	Unloader sticking.	Remove unloader, flush with water. Clean parts & replace.
	Worn Piston U-Cup.	Rebuild Unloader Valve (Service Centre).
	Debris In Valves of Pump.	Remove Valves and clean. Flush Manifold. Install Inlet Water Filter.
Not Unloading	Leak in gun/lance assembly or hose.	Replace leaking accessories.
	Debris or wear in Check Valve.	Remove Check Valve parts and clean.
	Check O-Ring.	Reface with emery cloth, or replace check valve.
	Damaged Piston U-Cup.	Rebuild Unloader Valve (Service Centre).
Low Pressure	Worn or Incorrect Nozzle Size.	Replace Nozzle with proper size.
	Improper engine R.P.M.	Adjust R.P.M. with Tachometer.
	Inadequate water supply.	Check supply. Clean or replace Inlet Water Filter.
	Cracked pistons as a result of dry running	Replace pistons.
Pulsation or Hoses Shaking.	Inadequate water supply.	Check supply. Clean or replace Inlet Water Filter.
	Debris in valves of pump.	Clean Debris from valves. Install Inlet Water Filter.
	Worn high pressure packings.	Install Plunger Seal Repair Kit.
	Damaged manifold head.	Check Manifold head for wear or cracks.
Water Leak Under Manifold.	Worn Plunger Seals.	Replace seals with Plunger Seal Repair Kit.
	Worn or damaged plungers.	Check for wear or cracks. Replace.
	Sand or dirt entering system.	Check or install Inlet Water Filter. Do not use well water.
	Running pump dry.	Check water supply and Inlet Water Filter.
Water in Pump Oil.	Worn Plunger Seals.	Replace seals with Plunger Seal Repair Kit.
	Worn or damaged Plungers	Check for wear or cracks. Replace.
	Sand or dirt entering system.	Check or install Inlet Water Filter. Do not use well water.
	Running Pump dry.	Check water supply and Inlet Water Filter.
Pump Oil Leak.	Travel plug in use on pump	Replace travel plug with breather plug
	Oil level too high.	Consult Owner's Manual.
	Wrong oil type.	Consult Owner's Manual.
	Water in oil.	Damaged Plunger Seals or Plungers.
	Engine R.P.M. too high.	Adjust engine R.P.M. with Tachometer.
	Operating on unlevel surface.	Move to level surface.
Recoil Hard to Pull.	Broken unloader spring.	Replace unloader spring. Note: unloader spring should be replaced every year or after every 500 hours.

For engine troubleshooting refer to the Honda engine handbook.

REPLACEMENT PARTS

AB32G & AB42G

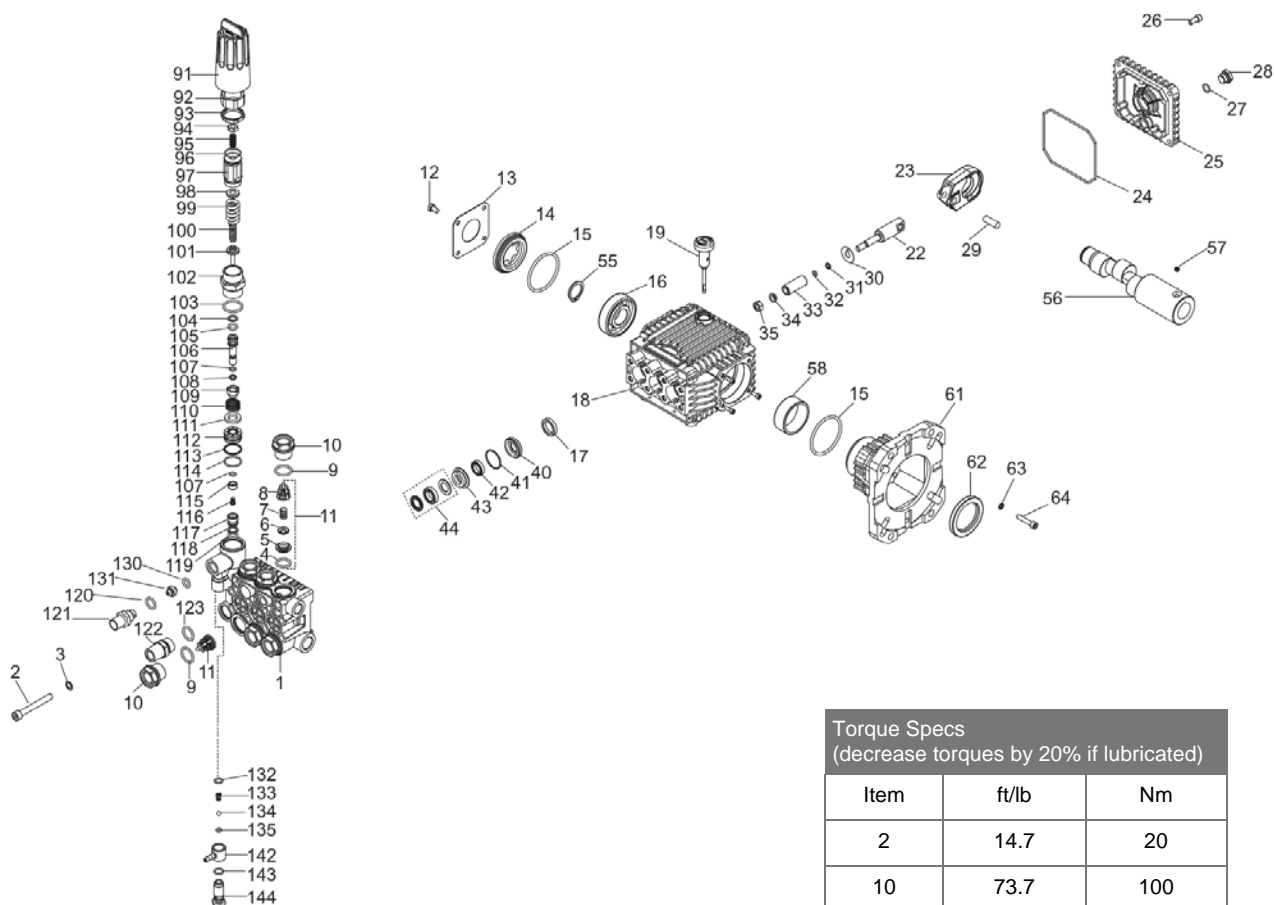


We stock a comprehensive range of spares and accessories for these machines.

IMPORTANT: Give model number, found on machine serial tag, when ordering parts or requesting information.

Position	Part No	Description	AB22	AB32	AB42
Nozzles					
A	C900035Q	0° NOZZLE, TIP SIZE 40 (RED)	✓		
	C915035Q	15° NOZZLE, TIP SIZE 40 (YELLOW)	✓		
	C925035Q	25° NOZZLE, TIP SIZE 40 (GREEN)	✓		
	C940035Q	40° NOZZLE, TIP SIZE 40 (WHITE)	✓		
	C965400Q	LP DETERGENT NOZZLE FOR Q SERIES	✓		
	C915035M	HP NOZZLE (15° ANGLE, TIP SIZE 35)		✓	
	C915030M	HP NOZZLE (15° ANGLE, TIP SIZE 30)			✓
	C915500MSS	LP DETERGENT NOZZLE		✓	✓
Lance					
B	C3930.00	400MM SS SINGLE LANCE	✓		
	CD10002	M22 QUICK COUPLER FOR NOZZLE	✓		
	M212003540	M22 X 3/8M CUOPLER BETWEEN LANCE & GUN	✓		
	C3924.01	684MM SS DOUBLE LANCE C/W BOOT		✓	✓
Gun					
C	M200019050	AL12 GUN WITH MELTED HANDLE & QC	✓		
	M200917400	AL50 GUN WITH MELTED HANDLE & QC		✓	✓
	M212003640	Nipple required to fit gun to hose (3/8"G-M to M22)	✓	✓	✓
Hose					
D	AR206K2214MB6X10	10 MTR HP HOSE (R2, 4500 PSI)	✓	✓	✓
	M212003520	Quick coupler to fit hose to gun (3/8"G-F to M22)	✓	✓	✓
Thermal Dump Valves					
E	7101359	INTERPUMP THERMAL DUMP VALVE 3/8"	✓		
	7101331	INTERPUMP THERMAL DUMP VALVE 1/2"		✓	✓
Inlet Strainer					
F	7101379	GENERAL PUMP INLET STRAINER ONLY	✓	✓	✓
	7100355	INLET FITTING WITH STRAINER (GENERAL PUMP)	✓		
	7100495	INLET FITTING WITH STRAINER (GENERAL PUMP)		✓	✓
Pumps					
G	3DNX	CAT PUMP (2000 PSI, 12 LPM)	✓		
	TX1508G8UIA	INTERPUMP (3,000 PSI, 12 LPM) UH2013CV (VER 026)		✓	
	TX1510G8UIAF	INTERPUMP (4,000 PSI, 12 LPM) UH2016CV (VER 027)			✓
Wheel					
H	A400015	10" WHEEL	✓	✓	✓
Engine Mounts					
I	AENGINEMOUNTS300	ENGINE MOUNTS (4 NEEDED)	✓	✓	✓

PUMP PARTS INTERPUMP TX Series 63 UI (AB32G & AB42G)



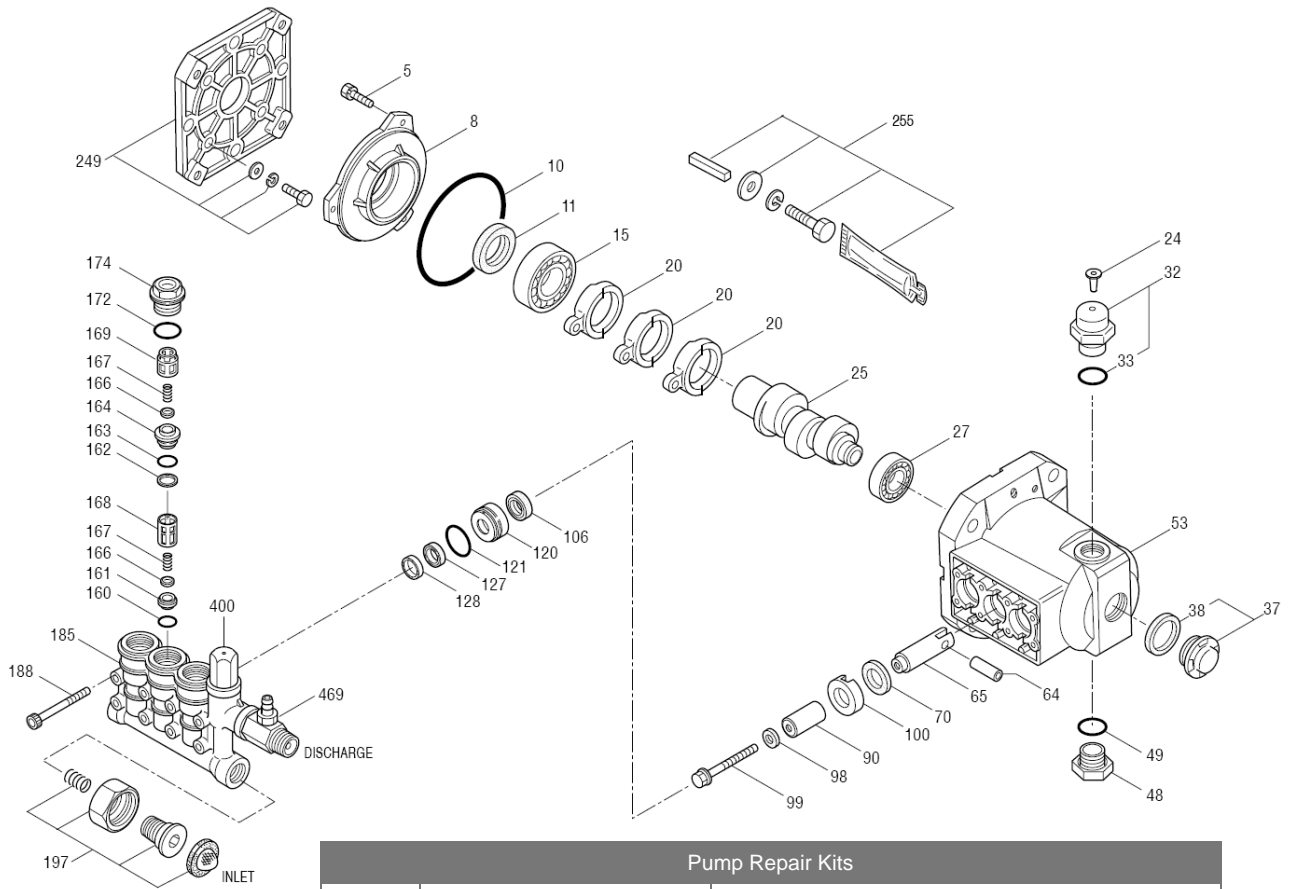
Torque Specs (decrease torques by 20% if lubricated)		
Item	ft/lb	Nm
2	14.7	20
10	73.7	100
12	7.3	10
26	7.3	10
28	14.7	20
35	11.0	15
64	7.3	10
121	29.5	40
122	29.5	40

Repair Kits						
Kit No.	K123 (valve kit)	K159 (oil seal kit)	K160 (minor seal kit)	K166 (major seal kit)	K236 (unloader kit)	K237 (detergent injector kit)
Items included	4-8 (11)	17	42,44	40-44	91-119	132-144
Pc in Kit	6	3	3	1	1	1

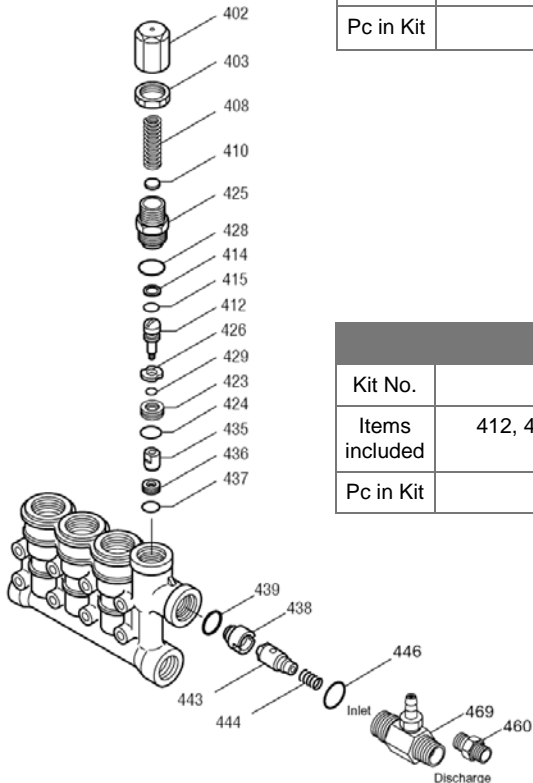
Order the right part first time ...
specify the pump model number when ordering parts.

Full parts breakdown available online ... www.aussiepumps.com.au

PUMP PARTS CAT 3DNX (ON AB22CA)



Pump Repair Kits		
Kit No.	31684 (seal kit)	31647 (valve kit)
Items included	98, 106, 121, 127, 128	160, 161, 162, 163, 164, 166, 167, 168, 169, 172
Pc in Kit	15	36



Unloader Repair Kit	
Kit No.	31465
Items included	412, 414, 415, 423, 424, 425, 426, 428, 429, 435
Pc in Kit	10

**Order the right part first time ...
specify the pump model number when
ordering parts.**

Full parts breakdown available online ...
www.aussiepumps.com.au

WARNING**OVERSPEEDING**

Do not operate machine at over 3200rpm (engine speed). Over speeding can cause serious pump damage.

EXCESSIVE BYPASS

Do not run on excessive by-pass. Switch machine off within two minutes of ceasing operation as excessive by-pass can cause heat build up in pump and subsequent damage. Excessive bypass running voids warranty.

HIGH PRESSURE SETTING

The high pressure pump is factory set to operate at its rated pressure. **DO NOT ADJUST.** Tampering with the pressure regulator will void warranty and can be DANGEROUS.

CHECK NOZZLE MONTHLY

If pressure drops off check nozzle for wear. Nozzles should be replaced on a regular basis (every month for machines in regular use, every three months for machines used intermittently). Using the machine with the incorrect nozzle size or worn nozzle will void warranty and can be DANGEROUS to the operator.

PRESSURE CLEANER DAILY CHECK LIST

- . Check pump oil level
- . Check engine oil level
- . Check nozzle for wear
- . Check all high pressure components for leaks:
 - . gun/lance
 - . HP hose
 - . all fittings
- . Check water filter and clean regularly
- . Check unloader, safety valve and thermal dump for leaks

NOTE: YOUR FAILURE TO SERVICE YOUR MACHINE REGULARLY MAY VOID WARRANTY

THREE MONTHLY REGULAR SERVICE

All machines need to be thoroughly serviced every three months. The service involved should include the engine manufacturer's recommendations (see separate Engine Manual) and the following;

- . Change pump oil
- . Check filter for foreign debris
- . Check unloader and thermal dump for leaks
- . Check all HP components for leaks: Gun/lance, HP hose and all fittings
- . Replace nozzles
- . Check pump mounting to engine key for wear, if key is worn see your local Aussie Eco Clean Service agent. NB Damage generated by worn keys is not covered by warranty!

LOOK AFTER YOUR MACHINE AND IT WILL LOOK AFTER YOU!

Aussie Accessories ... save time, save \$\$\$, save water



Australian Pump Industries Pty Ltd
7 Gladstone Road, Castle Hill NSW 2154
Ph: (02) 8865 3500 Fax: (02) 9894 4240
www.aussiepumps.com.au info@aussiepumps.com.au